

CSOP AT Meeting September 7, 2005

SFWMD Summary of Alternative 5
(Paul's Simple Summary)

Flow through WCA-3B (Use of the Hybrid Weirs)

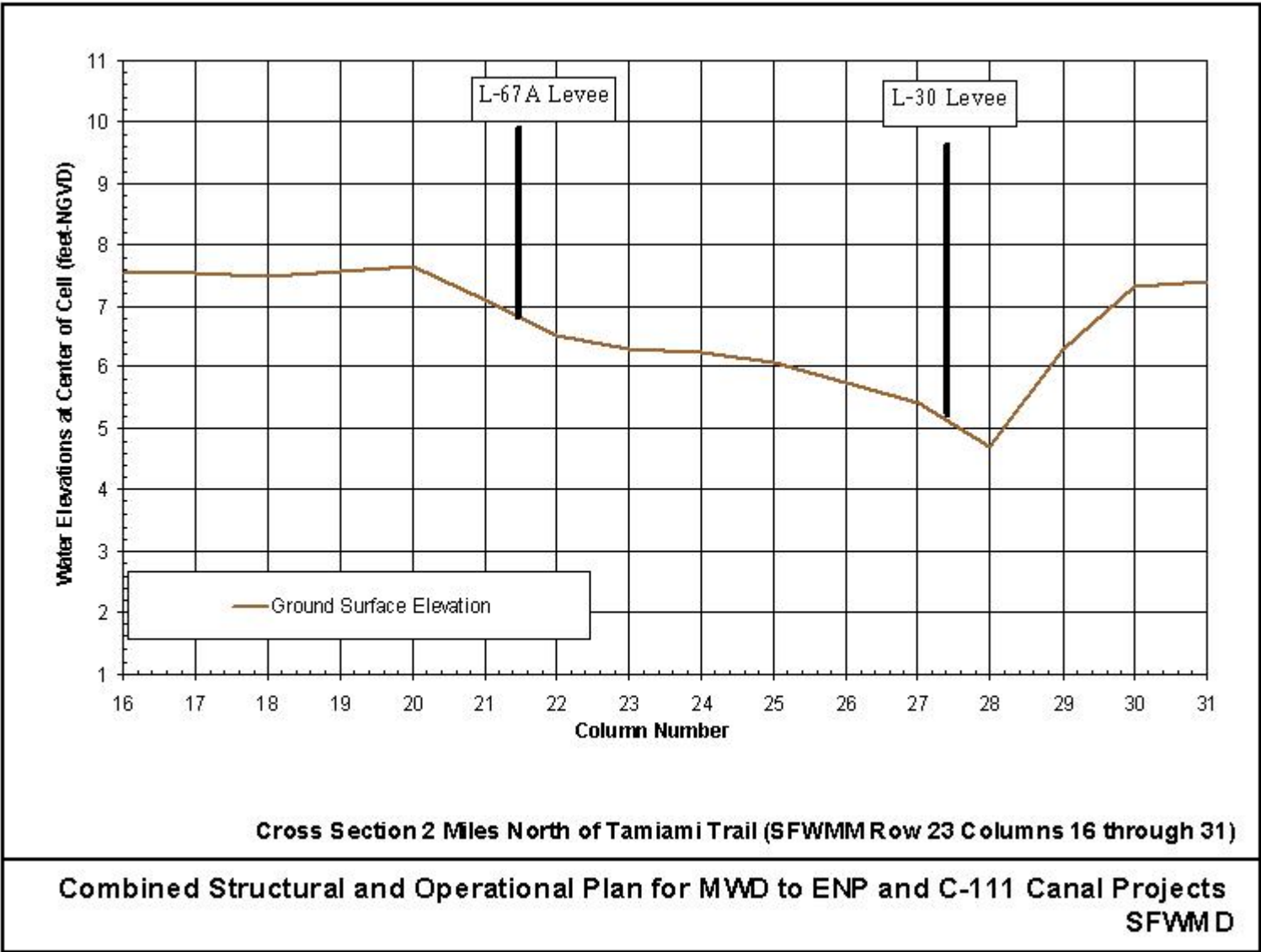
Alternative 5 provides 342,000 acre-feet of average annual flow from (out of) WCA-3B which is a three time the no action rate (104 KAF/YR) and 70% of the flow provided by the CERP (T18 487 KAF/YR).

At the request of ENP staff the S-333 constraint (close when L-29 > 8.5 feet) was removed from Alternative 5 resulting, with the other changes, in an increase in S-333 flow from 9,000 to 85,000 acre-feet per year.

Run	West SS		Flow to NESS				SRS
	Sub Total		WCA-3B		Sub Total		TOTAL
	(AF/Y)	(%)	(AF/Y)	(%)	(AF/Y)	(%)	(AF/Y)
IOP(ALT7R5)	684	76%	13	6%	224	24%	907
No Action	495	52%	104	23%	462	48%	957
ALT4	484	56%	372	98%	381	44%	865
ALT5	493	54%	342	80%	427	46%	920
ALT5CAP	323	36%	546	93%	586	64%	909
ALT5CON	520	57%	300	76%	394	43%	914

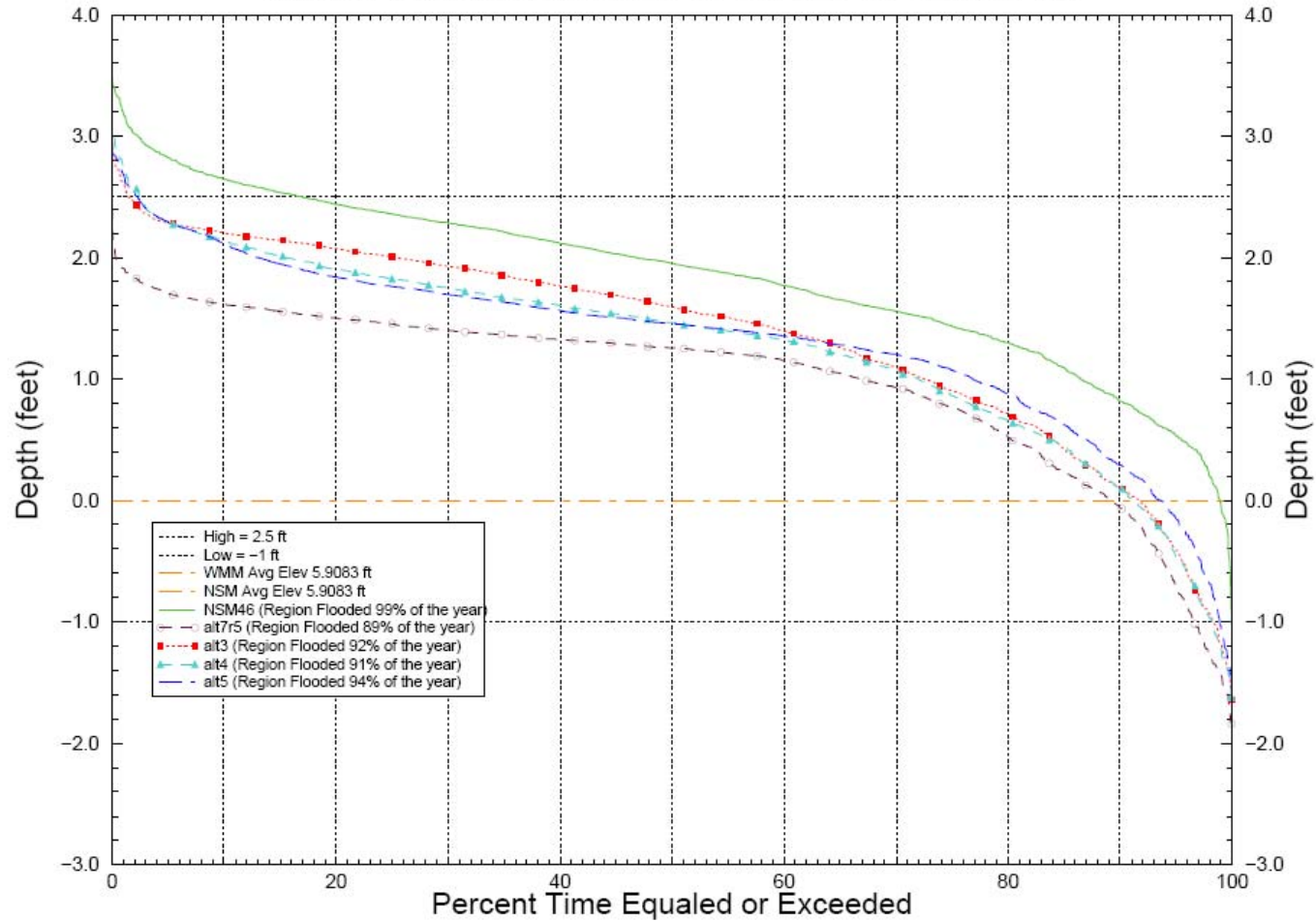
Run	S-333 (AF/Y)	S-334 (AF/Y)	S-335 (AF/Y)	S-356 (AF/Y)	G-211 (AF/Y)
IOP(ALT7R5)	238	28	26	34	165
No Action	391	33	26		87
ALT4	9	0	208		94
ALT5	85	0	98	194	61
ALT5CAP	40	0	126	225	58
ALT5CON	94	0	92	188	62

	SE WCA-3A			SE WCA-3B			NESS		
	IR124			IR128			IR129		
Run	>2.5 (wk)	>2.0 (wk)	<1.0 (wk)	>2.5 (wk)	>2.0 (wk)	<1.0 (wk)	>2.5 (wk)	>2.0 (wk)	<1.0 (wk)
IOP(ALT7R5)	439	503	3	28	138	77	0	6	63
No Action	153			299					
CERP (D13R) 1	13			122					
ALT1	290		4	54		54	87		51
ALT2	87		12	437		90	59		38
ALT3	181		19	147		69	28		30
ALT4	250		0	201		24	47		34
ALT5	390	509	3	97	308	12	43	143	20
ALT5CAP	191	355	3	431	593	12	72	203	20
ALT5CON	415	518	3	49	263	12	28	137	20



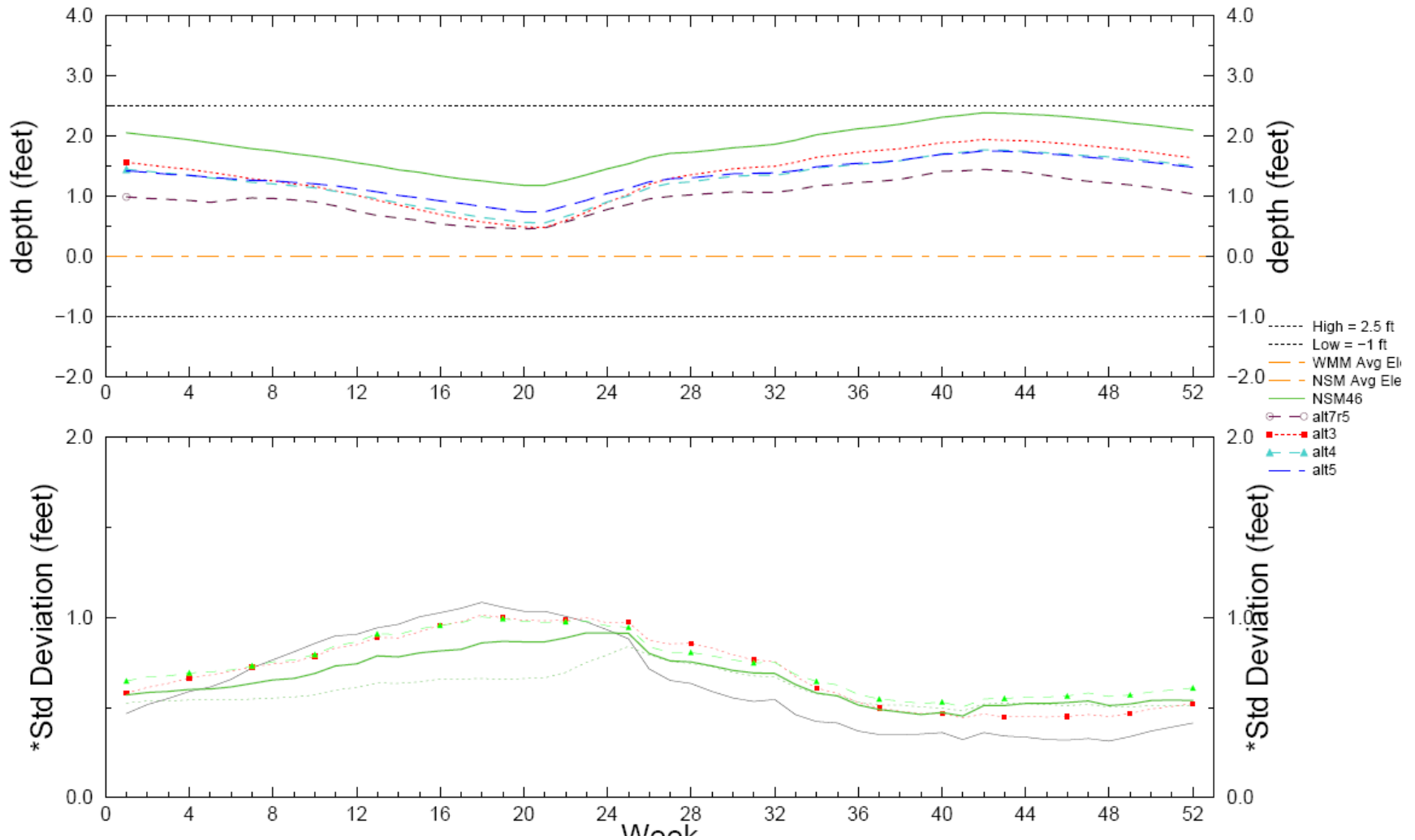
Normalized Weekly Stage Duration Curves for NE Shark Slough

Indicator Region 129 (R19C22-23 R20C22-26 R21C22-26)



Temporal Variation in Mean Weekly Stage for NE Shark Slough

Indicator Region 129 (R19C22-23 R20C22-26 R21C22-26)



Flood Protection Summary

The S-18C wet season appears too high as the wet season water levels in cells table located North of S-18C are showing water level rises exceeding 0.25 feet.

The stage duration curves for L-30 and L-31N (S-335 to G-211) are close to ISOP 2001 which equals IOP for Protection of the CSSS (ALT7R5).

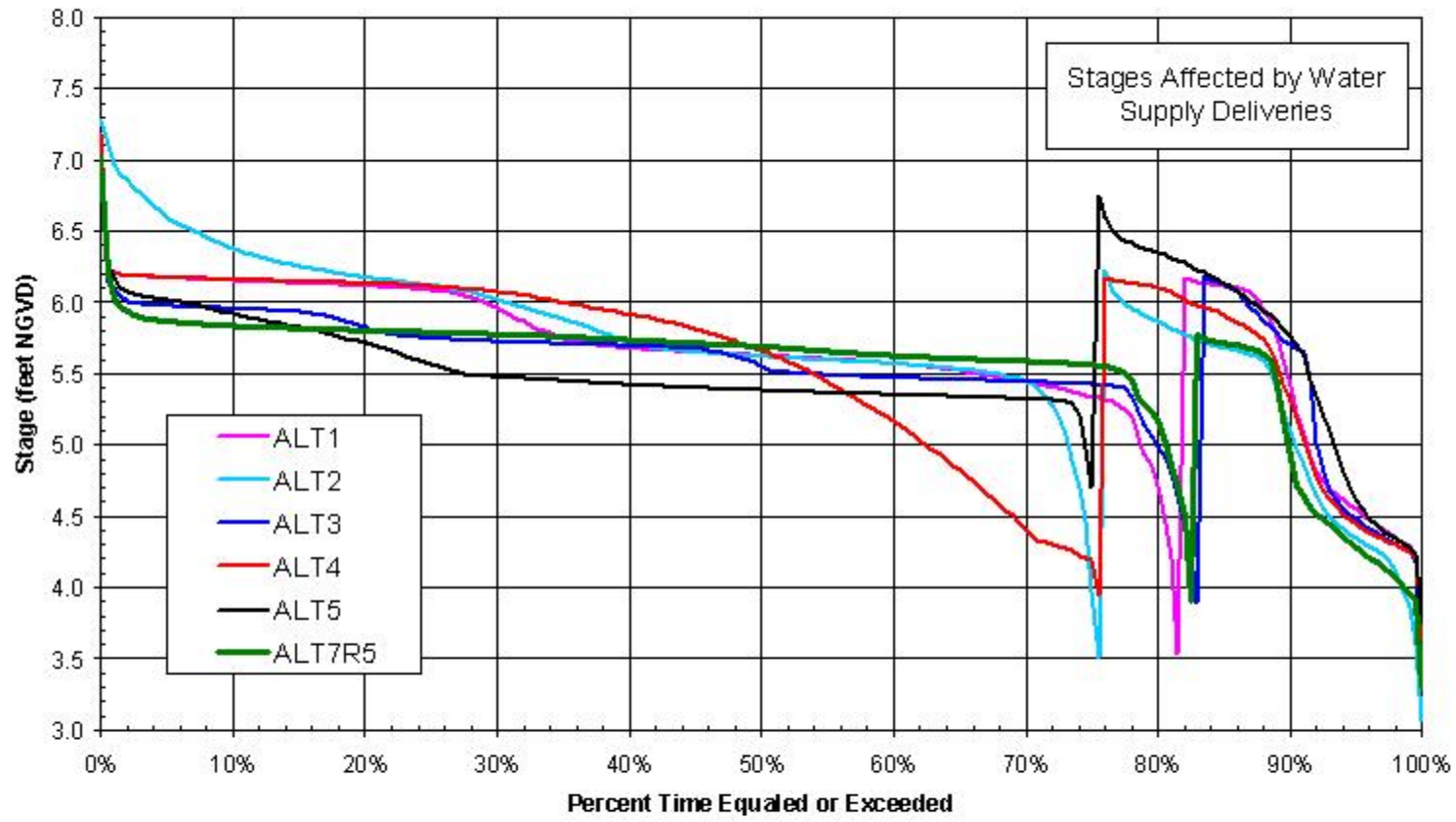


FIGURE 1
L-31N Stages (S-335 to G-211) Estimated by SFWMM

Operation of S-332B and S-332C

The dry season gradient limit of 0.1 feet per mile substantively limit the operation of the S-332B and S-332C detention and buffer systems.

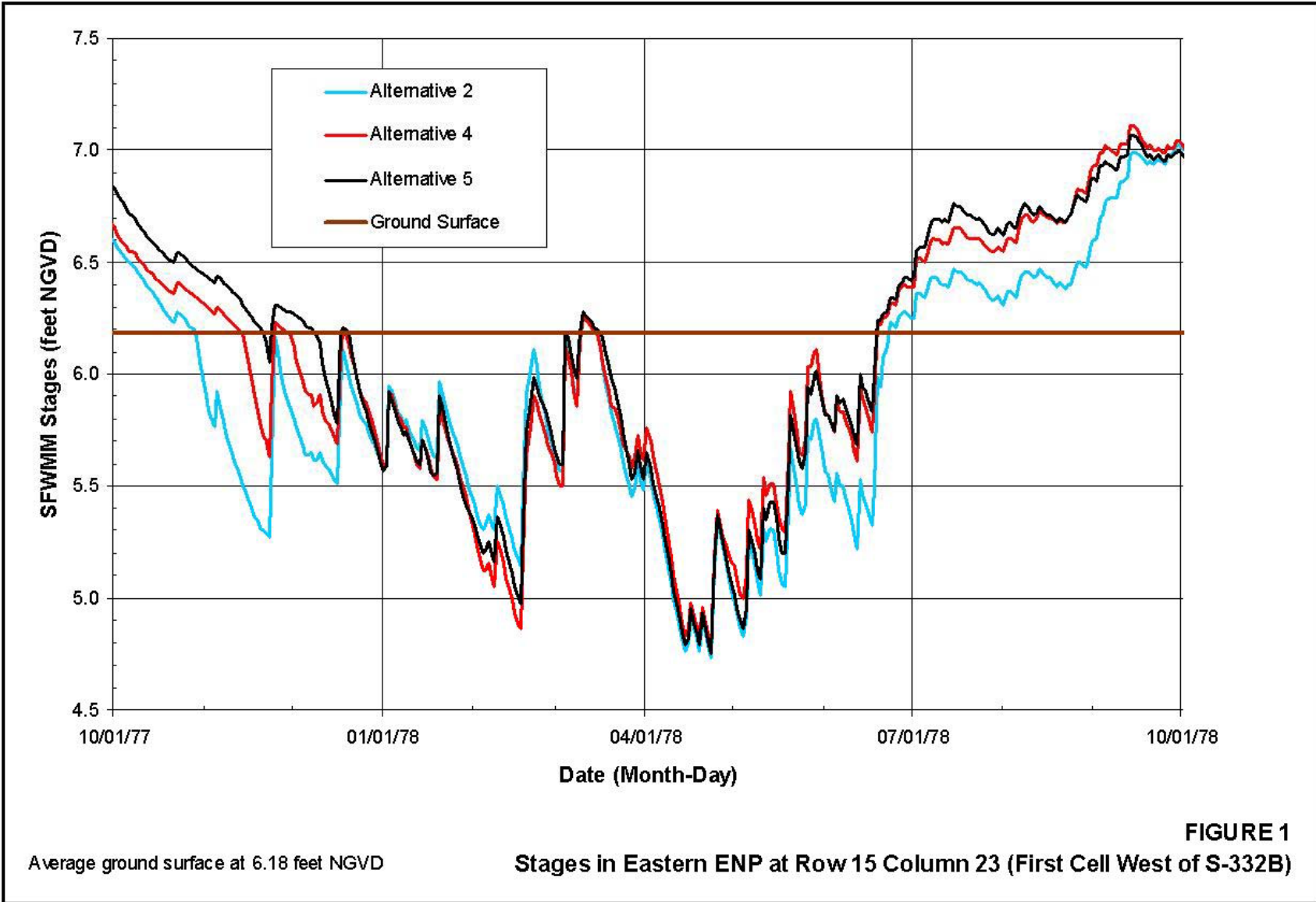


FIGURE 1

Average ground surface at 6.18 feet NGVD

Stages in Eastern ENP at Row 15 Column 23 (First Cell West of S-332B)

**Combined Structural and Operational Plan for C-111 Canal Project and MWD to ENP
SFWMD**

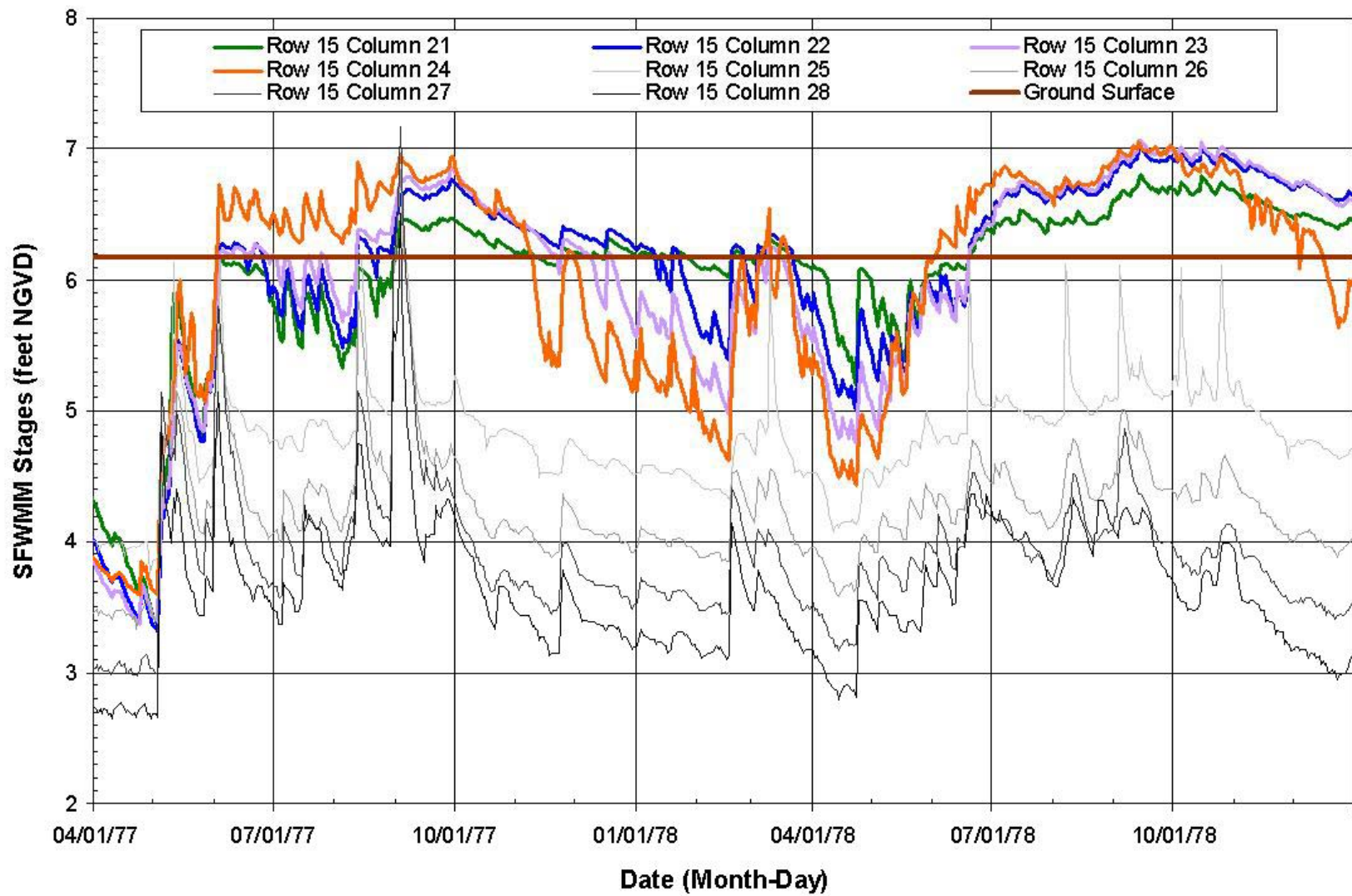
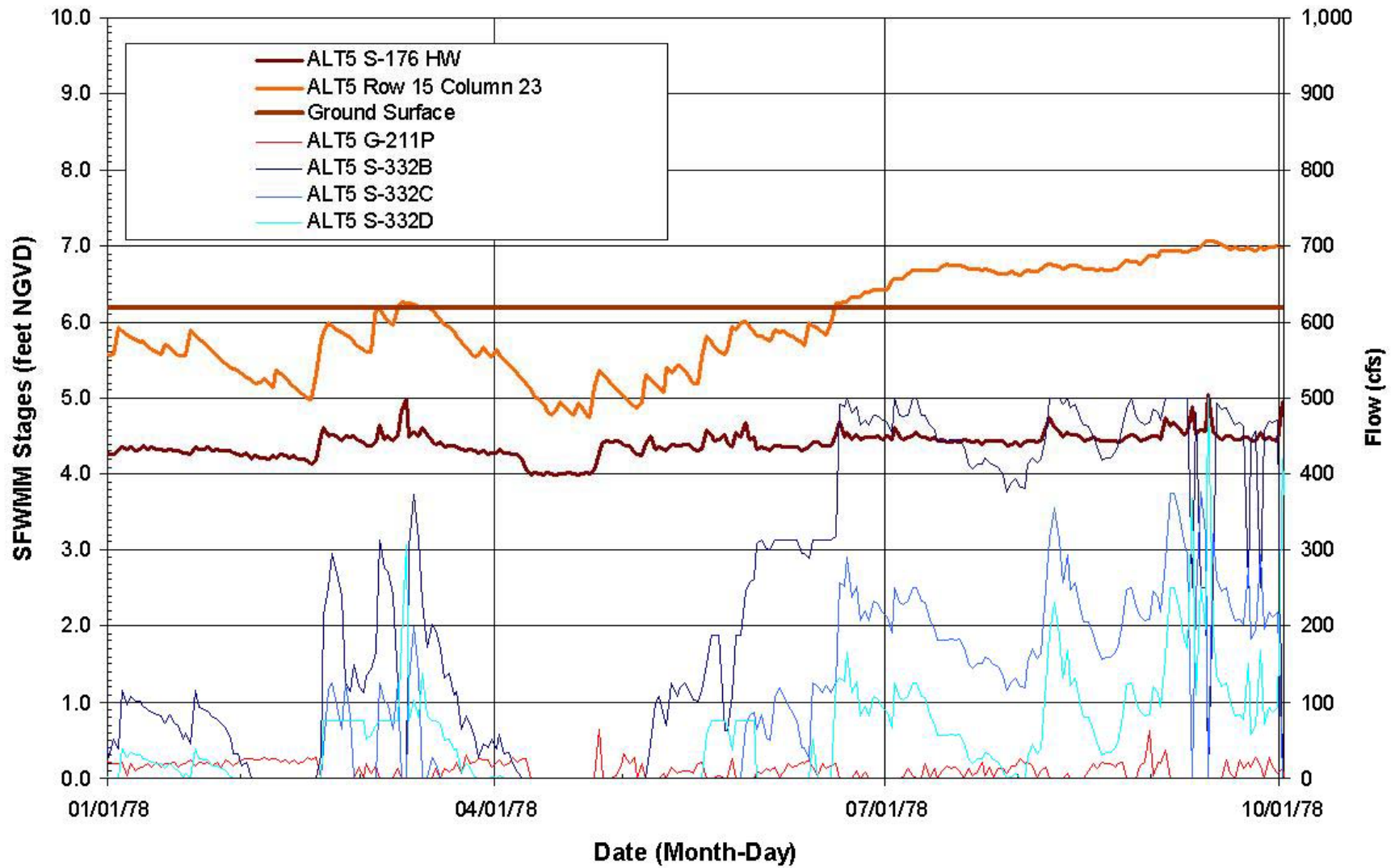


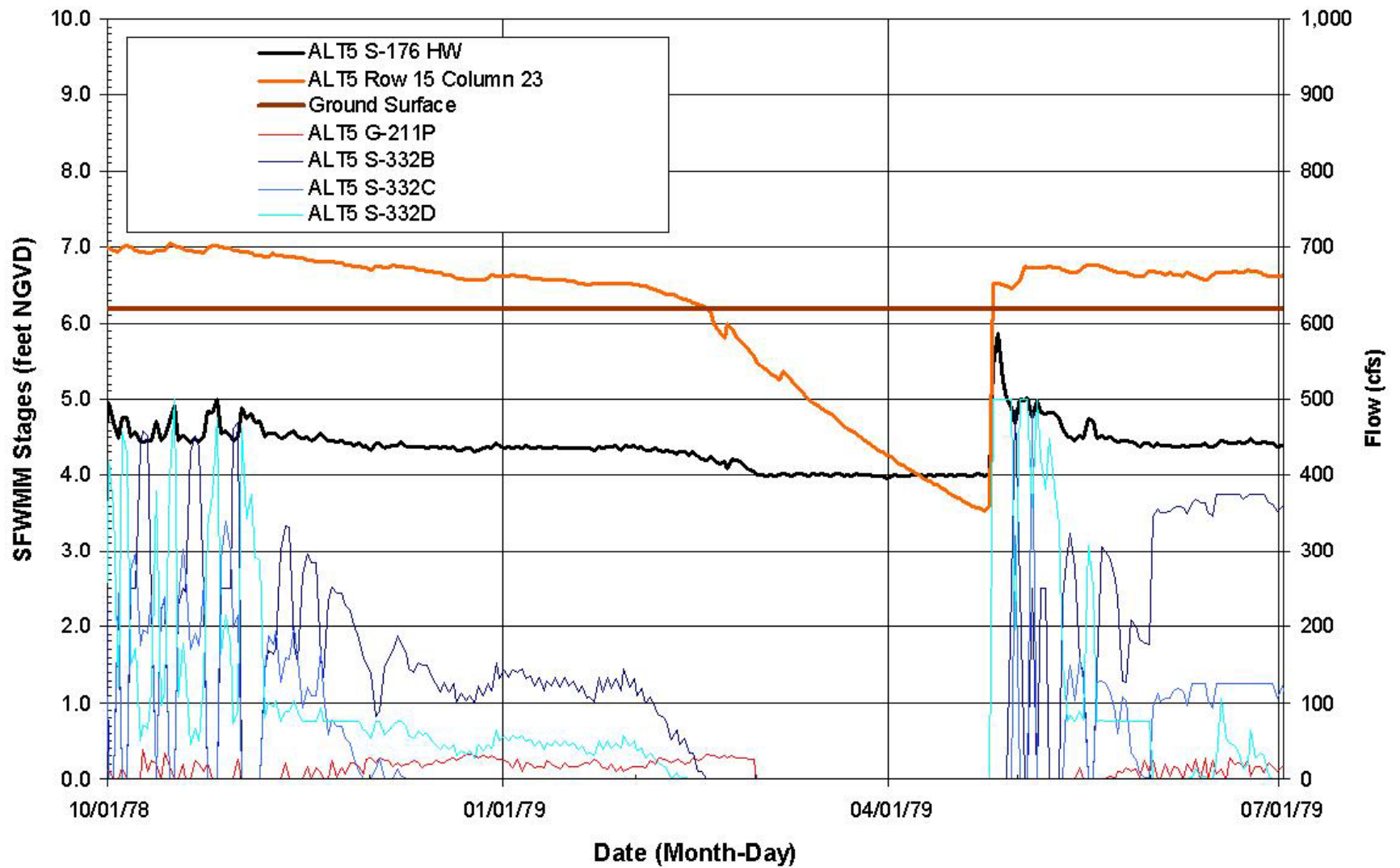
FIGURE 1
SFWMM Stages in Eastern ENP



Average ground surface at 6.18 feet NGVD

Stages in Eastern ENP at Row 15 Column 23 (First Cell West of S-332B)

FIGURE 2



Average ground surface at 6.18 feet NGVD

Stages in Eastern ENP at Row 15 Column 23 (First Cell West of S-332B)

FIGURE 3

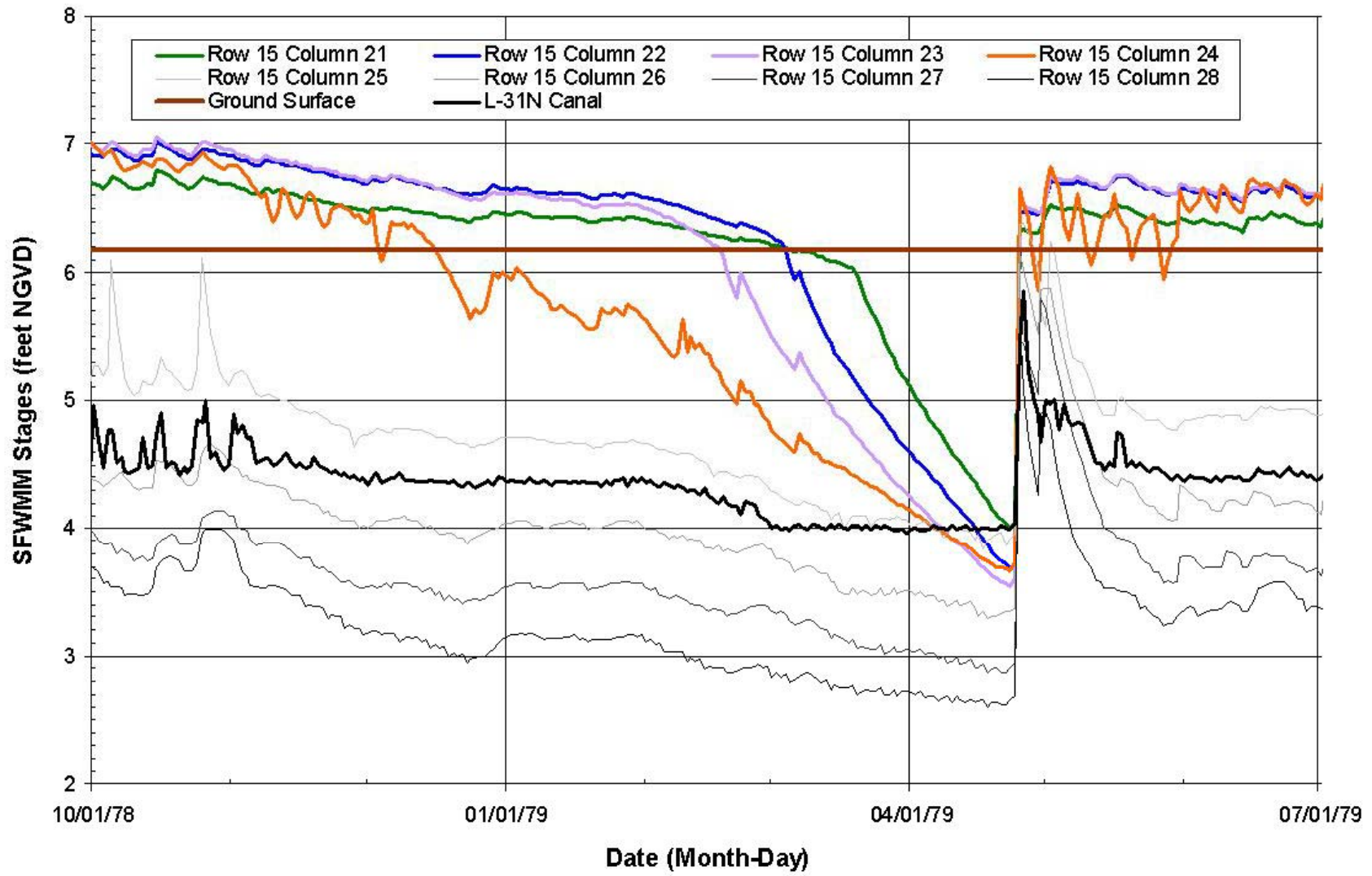


FIGURE 4
SFWMM Stages in Eastern ENP