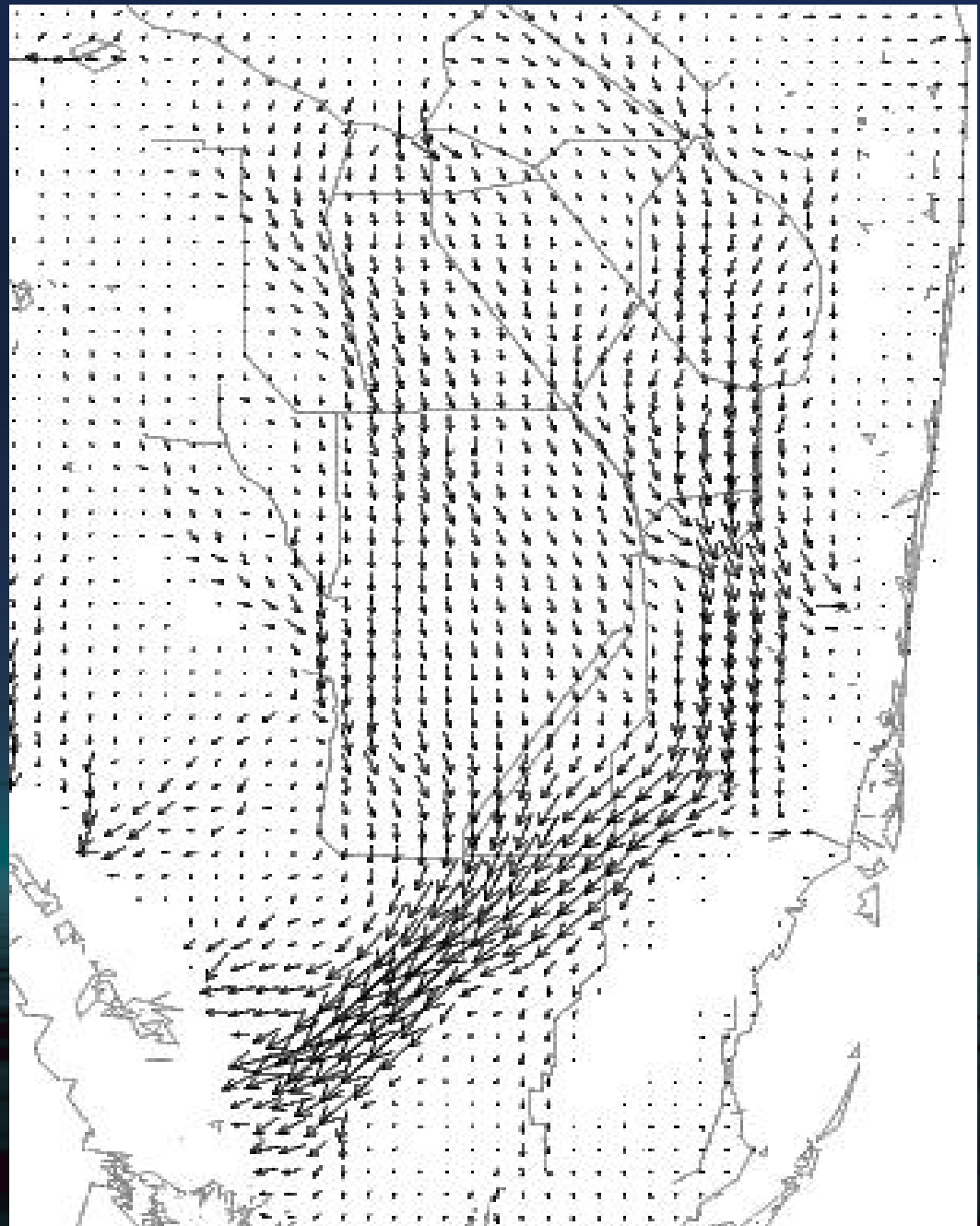
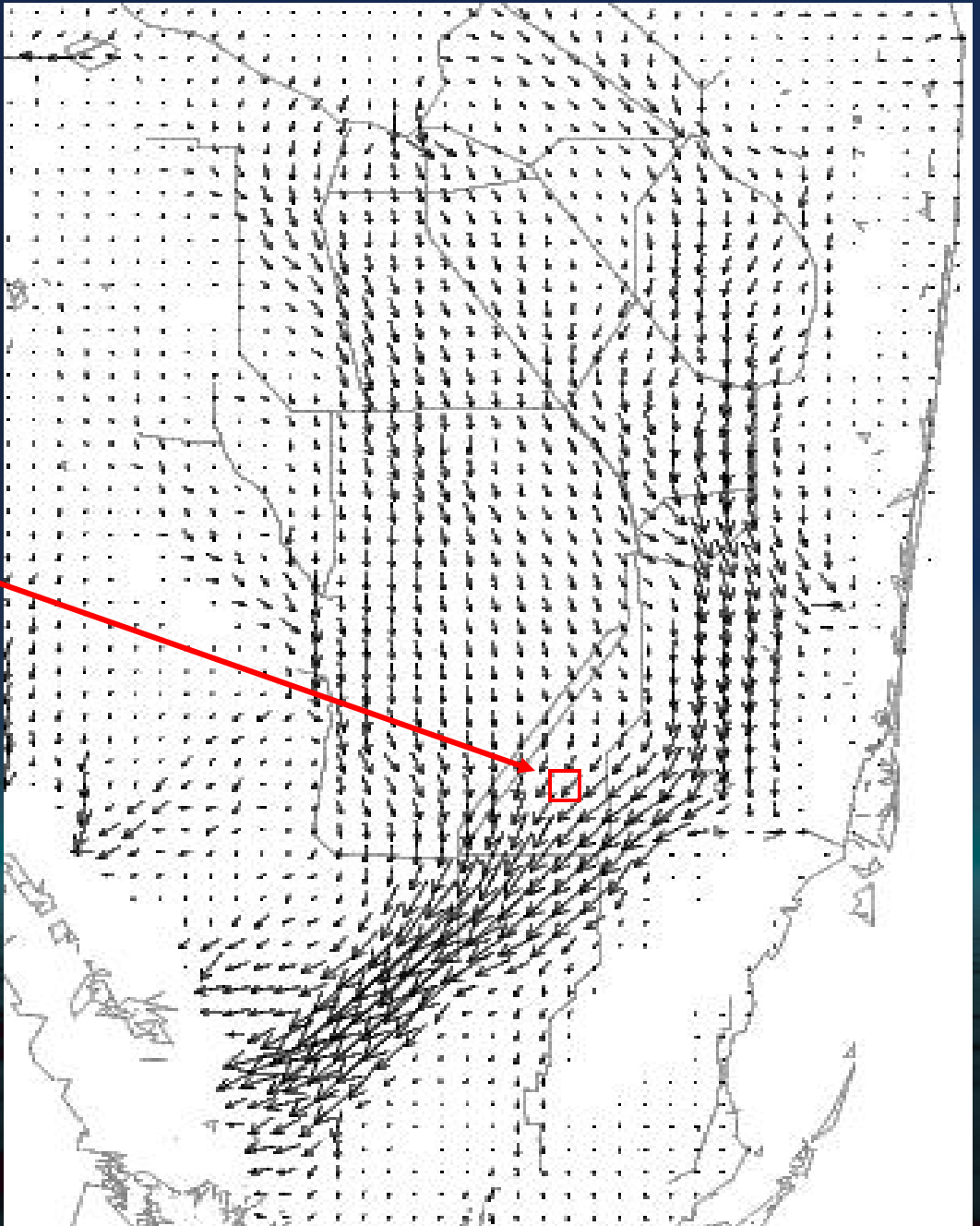
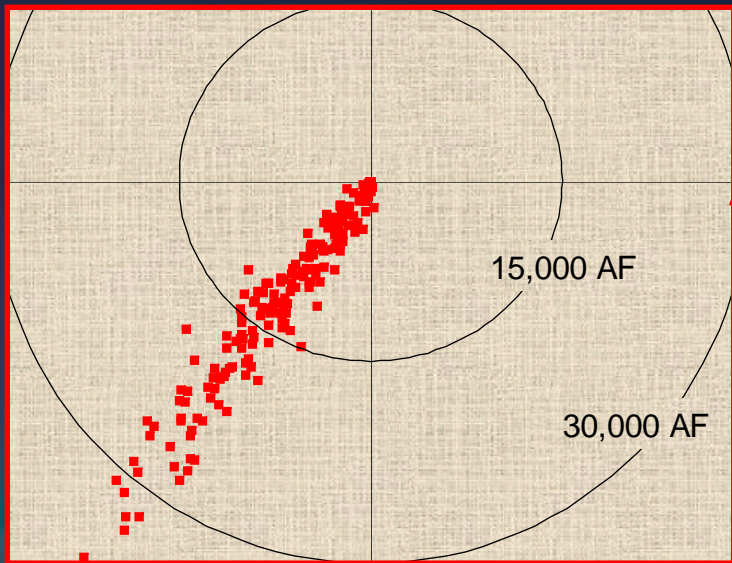


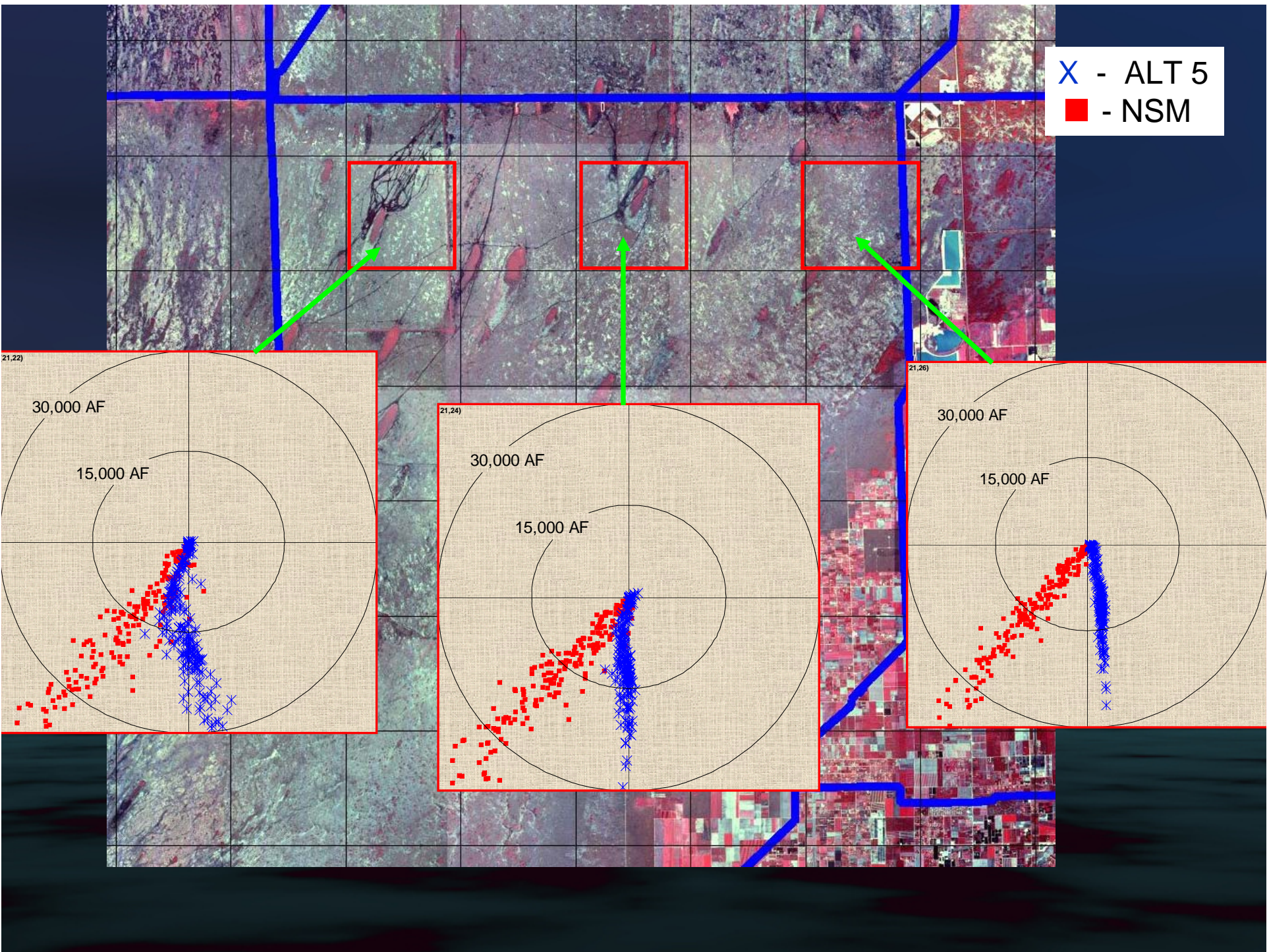
Flow Vectors computed
by the Natural System
Model and the South
Florida Water
Management Model

Available as monthly
flow volume for each
month for every grid cell

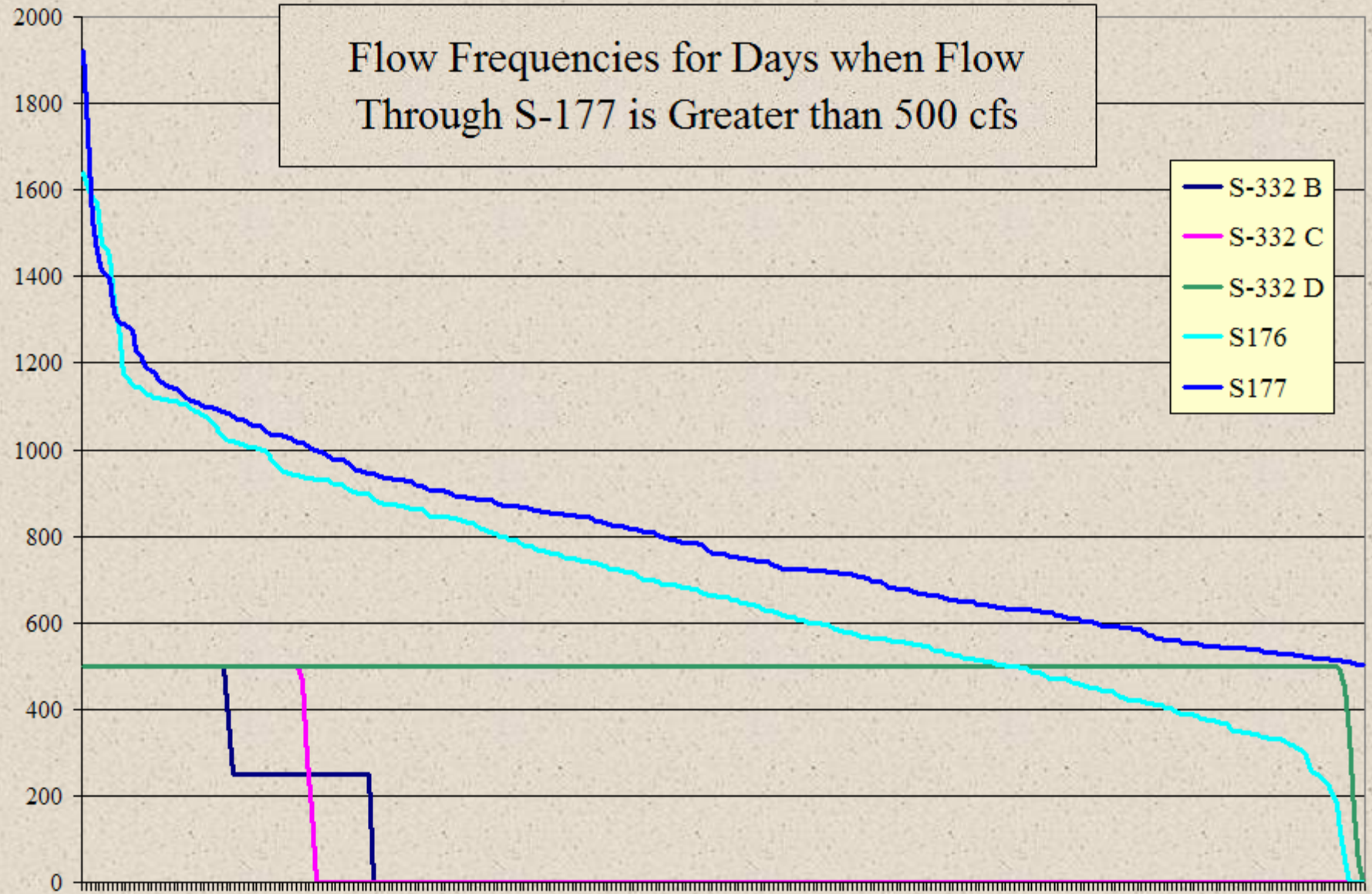


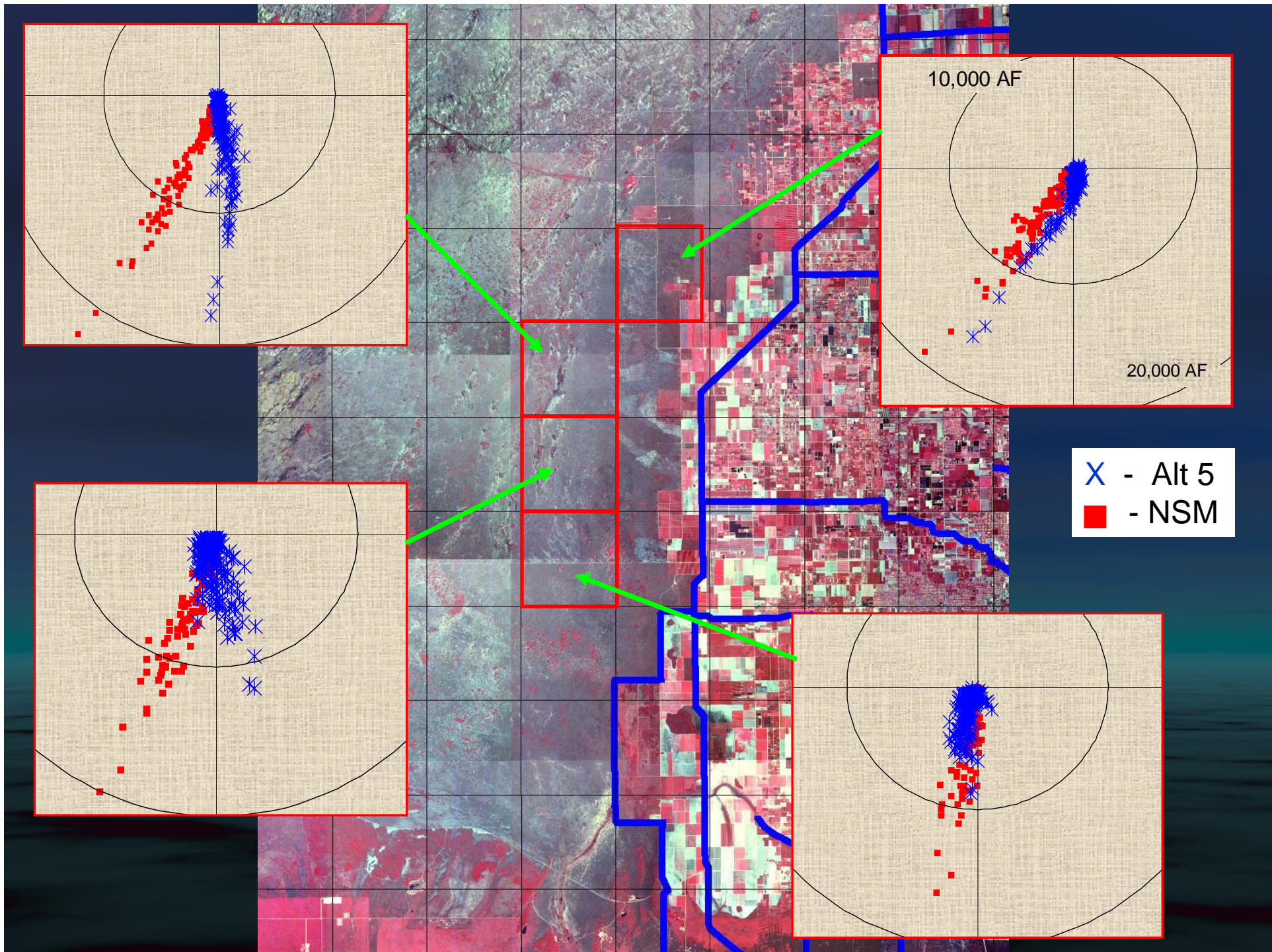


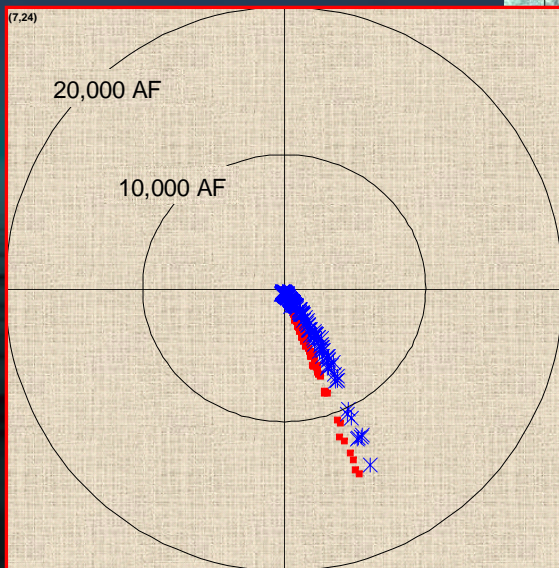
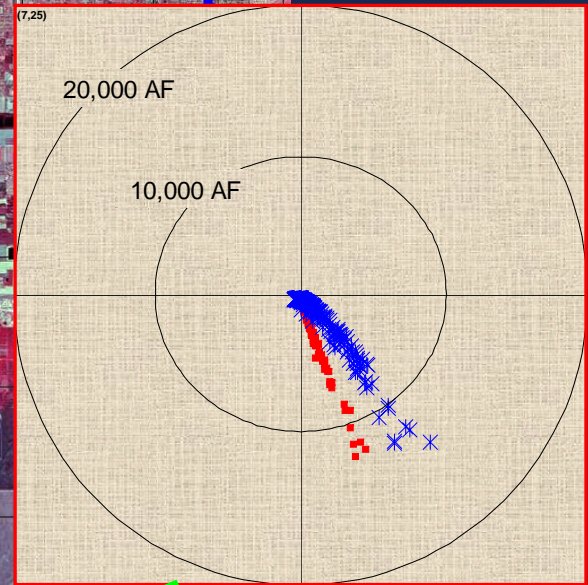
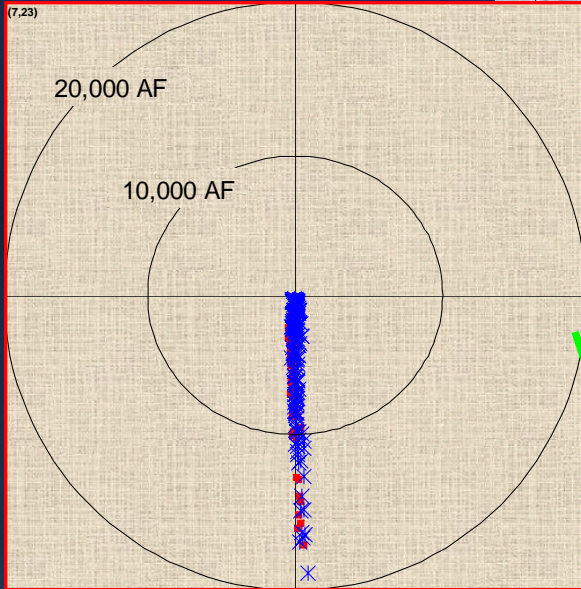
X - ALT 5
■ - NSM



Flow Frequencies for Days when Flow Through S-177 is Greater than 500 cfs







X - Alt 5
■ - NSM

Recommendations

- S-356 must retain 950 cfs capacity.
- S-18C Operating Levels must be lowered to eliminate induced flooding of farmland near Florida City.
- S-332 Buffers must be used more aggressively to improve Northern Taylor Slough hydrology and reduce excess flow to southern C-111.
- Higher water table in areas east of L-31N should be eliminated through operating adjustments to S-332 B, C & D pumps and the S-176 structure.