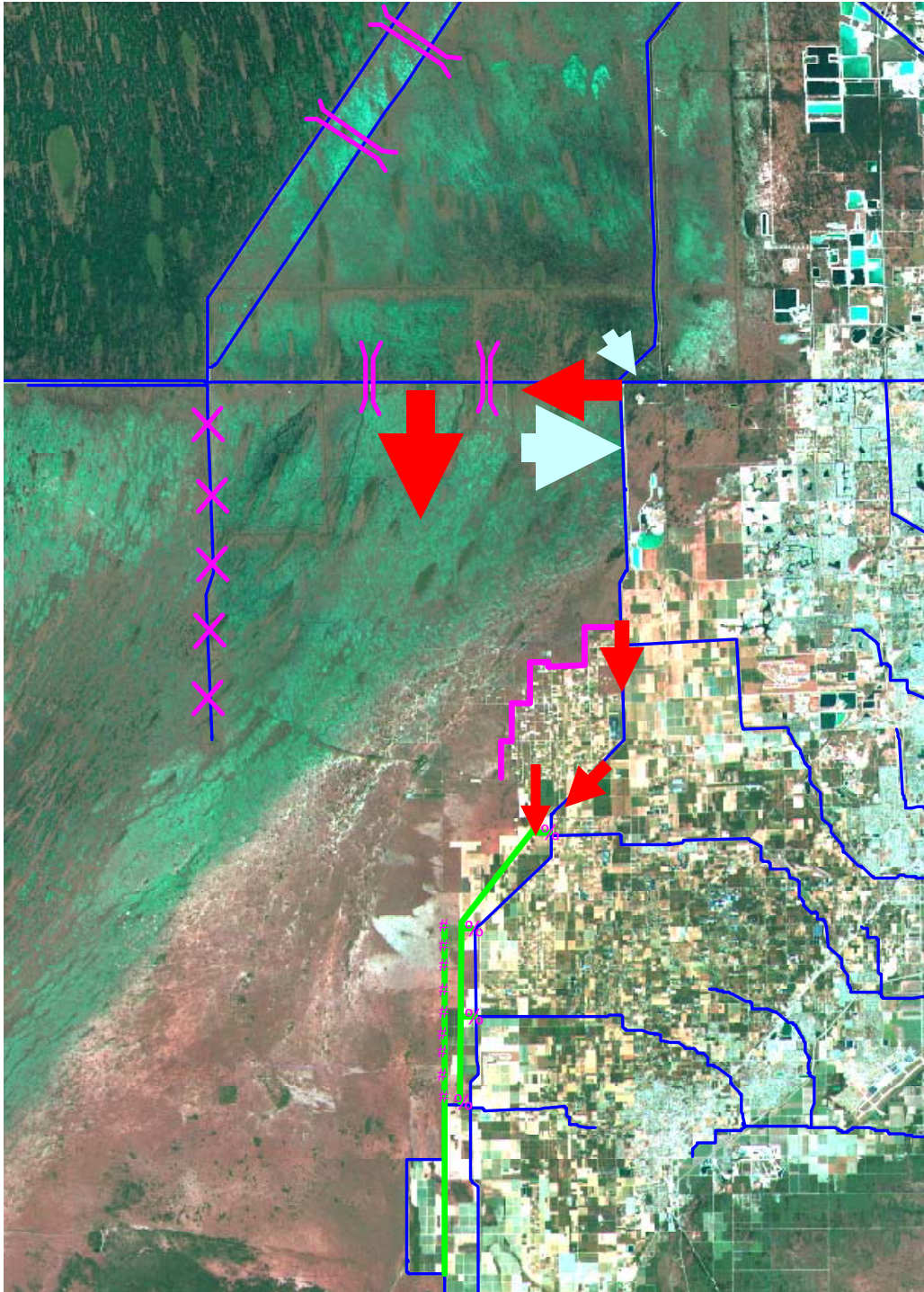


The MWD and C-111 Plans

MWD: Return ENP seepage to ENP through S-356. Pump 8.5 SMA runoff north.

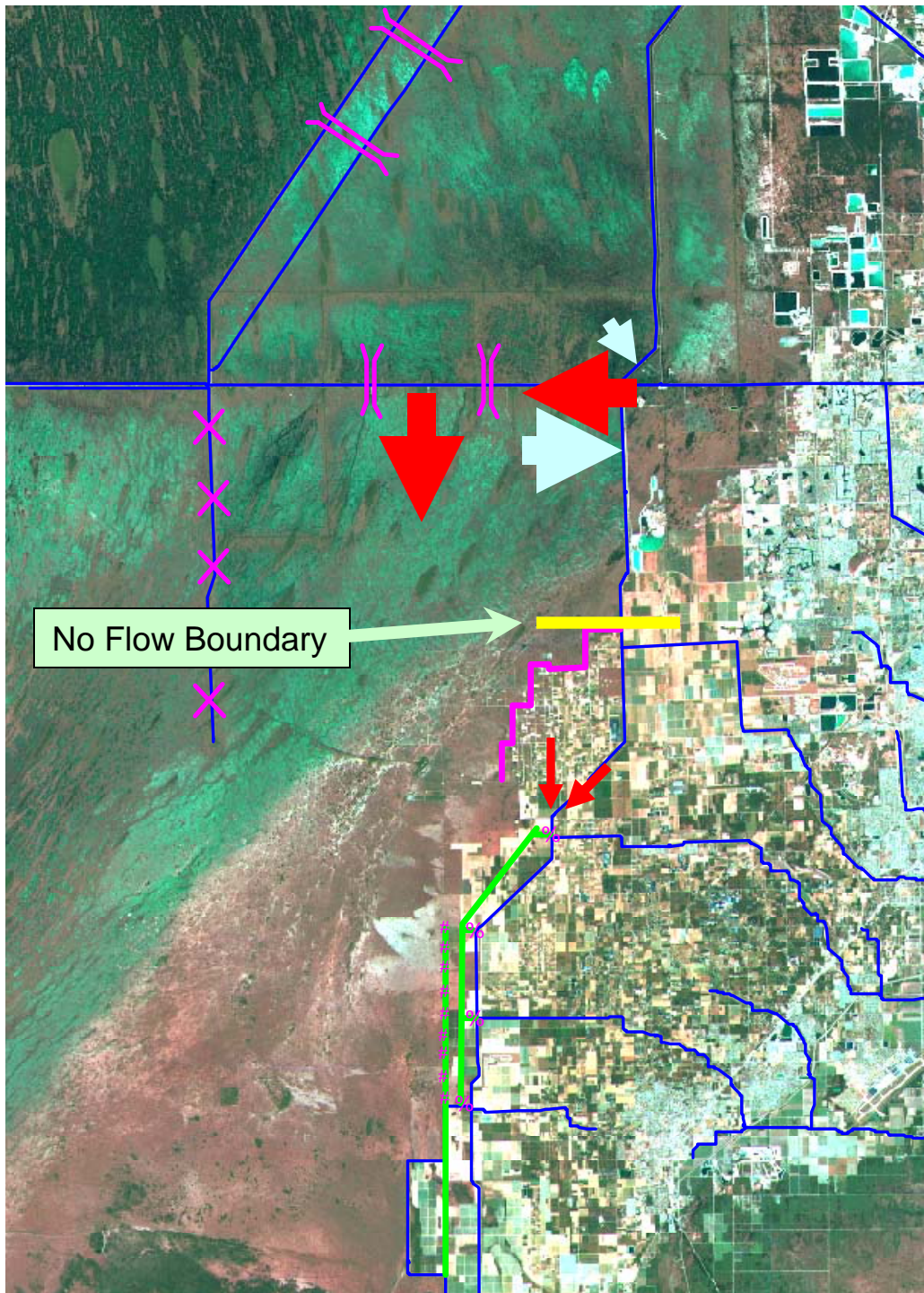
C-111: No Flow from the north; Basin runoff pumped through buffer cells to Park



Alternative 4

MWD: Some NESRS seepage returned to ENP at S-356; 8.5 SMA and some NESRS seepage continue to flow to the south

C-111: Inflow to buffer cells limited; no outflow to ENP



Scenarios 4b1 and 4b2

MWD: Determine size of S-356 pump needed to return ENP seepage to ENP. No-flow boundary at G-211.

C-111: Attempt gravity flow only at S-331 to limit flow into C-111 Basin.

Results:

950 cfs capacity at S-356 was sufficient to eliminate flow through G-211 and S-338.

- + Increased sheetflow in NESRS**
- + Better water level control downstream**

- Reduced flow to Biscayne Bay;**
- Reduced flow to Taylor Slough;**

These effects can be corrected through discretionary releases if needed.

- Possible impact on flow from 3B to NESRS due to higher stage in L-29 Canal.**

Recommendations for Alt 5:

- 1. Set S-356 capacity at 950 cfs minimum.**
- 2. Discretionary flow only through G-211 and S-338.**
- 3. Continue to operate S-331 for flood protection.**
- 4. Increase use of C-111 buffer cells to improve hydroperiod in ENP.**