

SCREENING FOR POTENTIAL

AG IMPACTS

Dan Peck

USACE

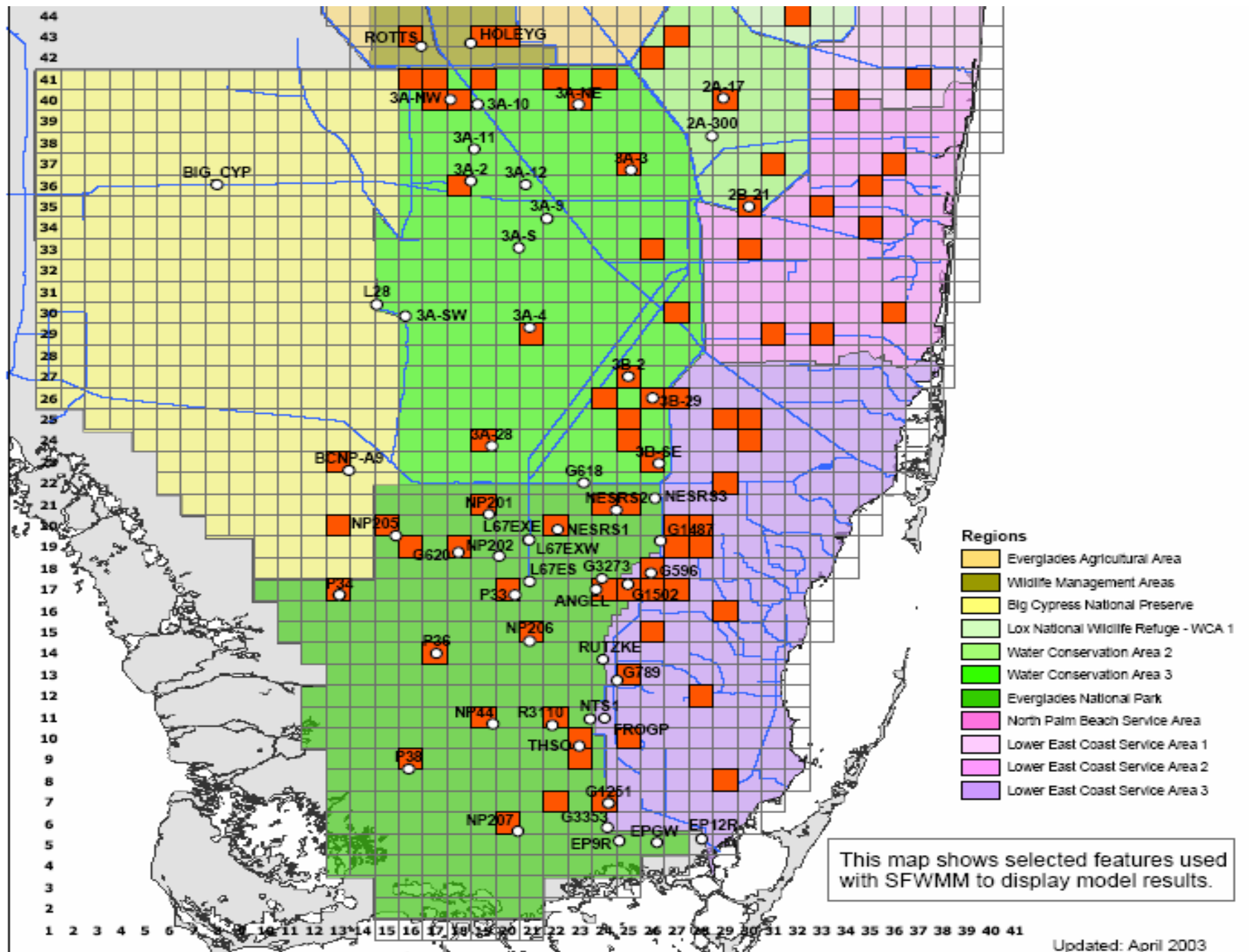
- Row crops
 - All Year
 - September – March
- Fruits and Nurseries
 - All Year
- Two models
 - SFWMM 2 X 2
 - ModBranch

Row Crops

- **Event** is defined as how many times in Period of Record (POR) of the SFWMM that water is within the root zone of crops (8 inches below surface).
- POR is for the period 1/1/1965-12/31/2000.
- **Percent of time** is defined as the total duration in days divided by the number of days in POR. The percent of time water is within the root zone of crops.
- Crop type was determined by dominant type within cell.
- **Average Duration** is defined as average duration of the events in days.

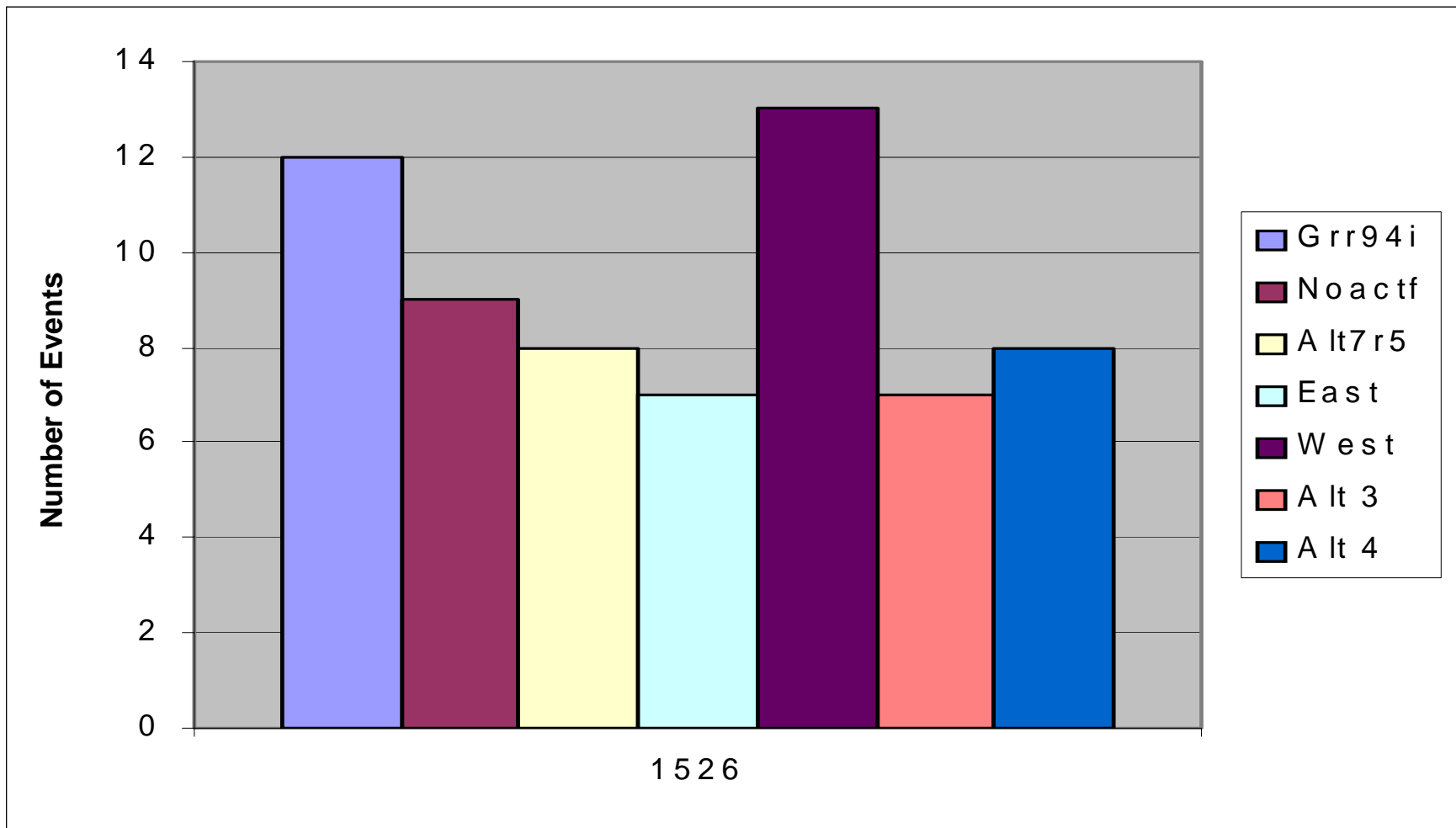
Fruits and Nurseries

- **Event** is defined as how many times in Period of Record (POR) of the SFWMM that water is within the root zone of fruit trees or nurseries (18 inches below surface).
- POR is for the period 1/1/1965-12/31/2000.
- **Percent of time** is defined as the total duration in days divided by the number of days in POR. The percent of time water is within the root zone of fruits and nurseries.
- **Average Duration** is defined as average duration of the events in days.
- Crop type was determined by dominant type within cell.



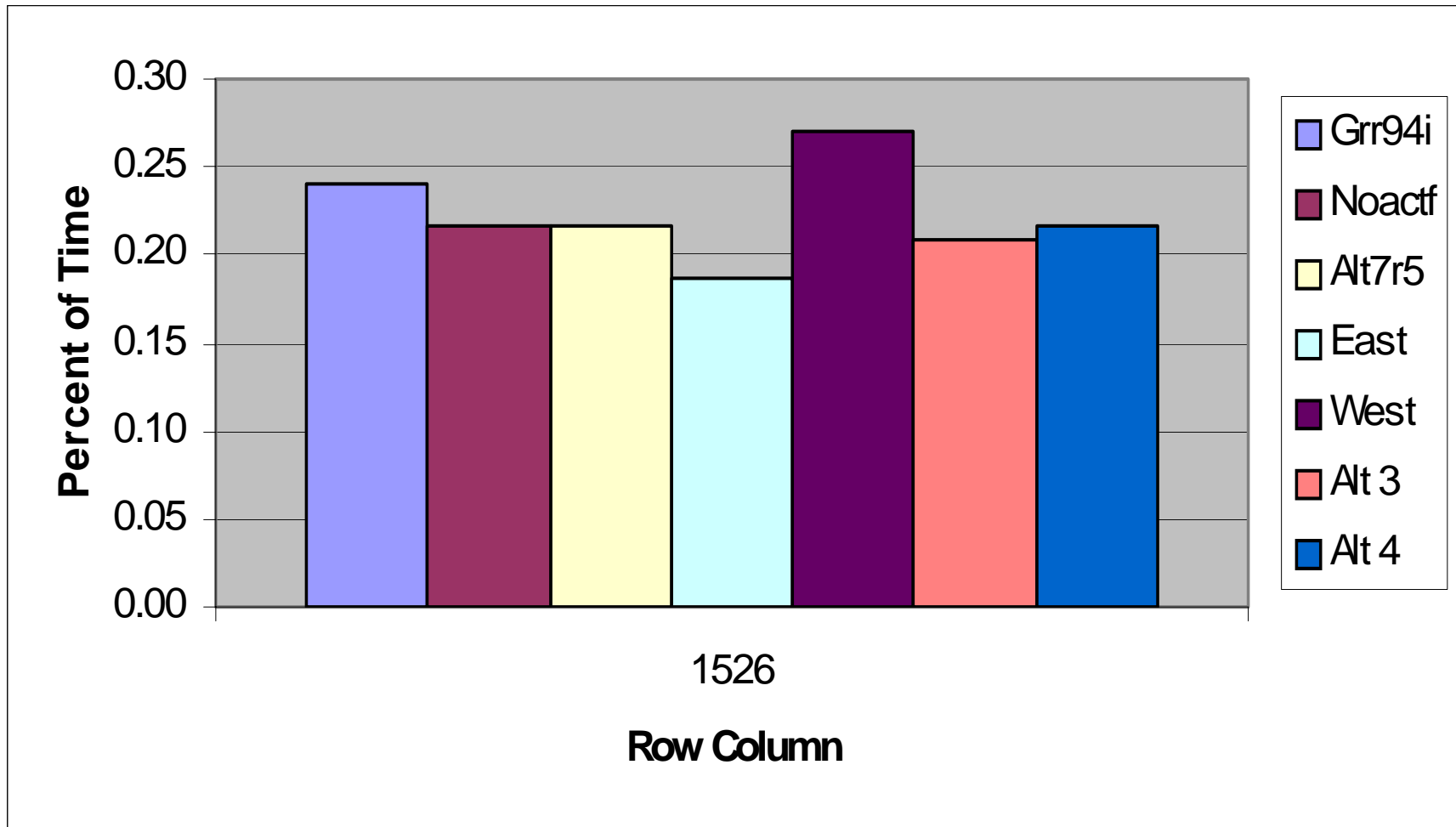
SFWMM Results

Row Crops All Year
SFWMM 1/1/1965-12/31/2000
Number of events

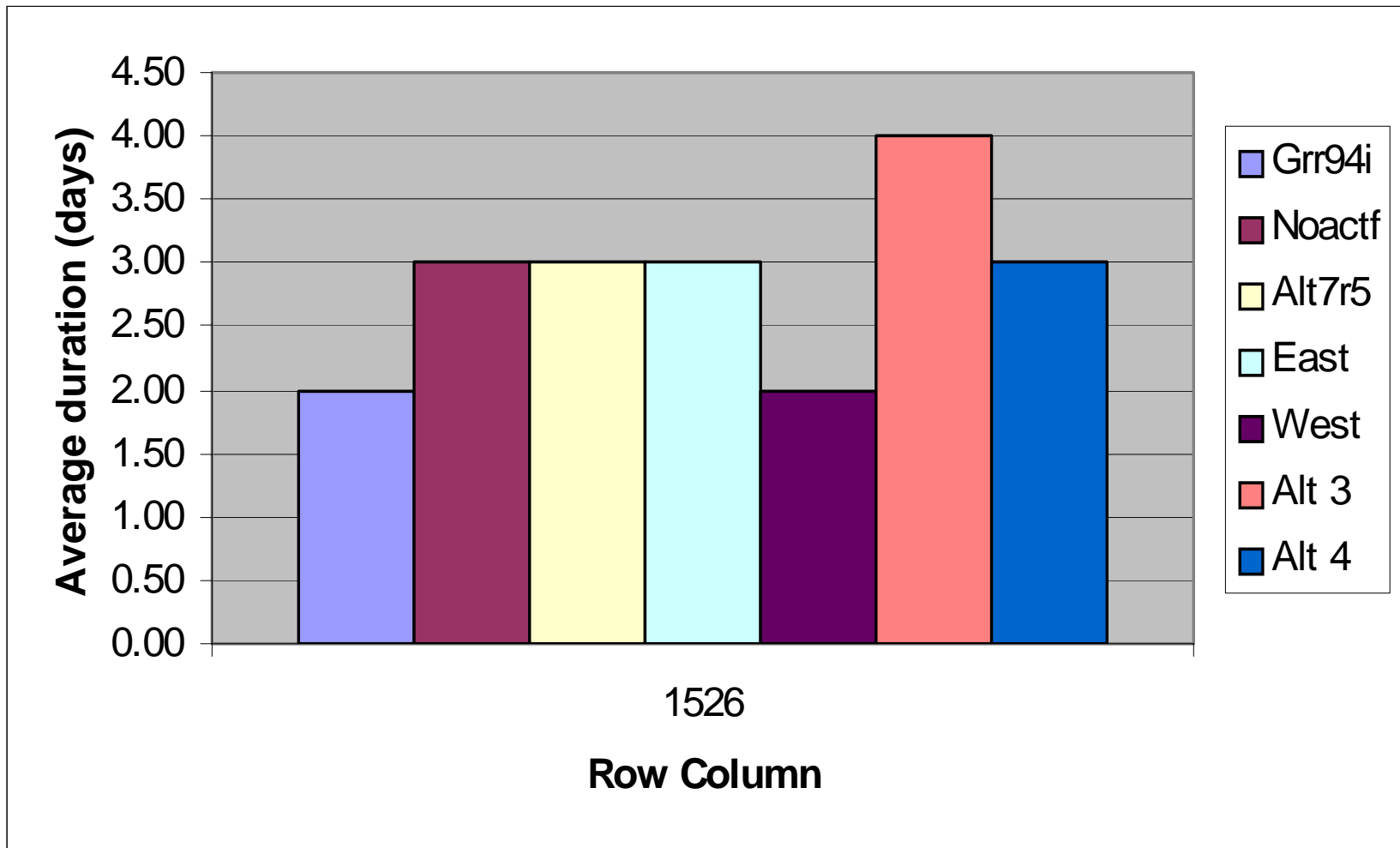


1526 is just south of C-102 and just east of L31N

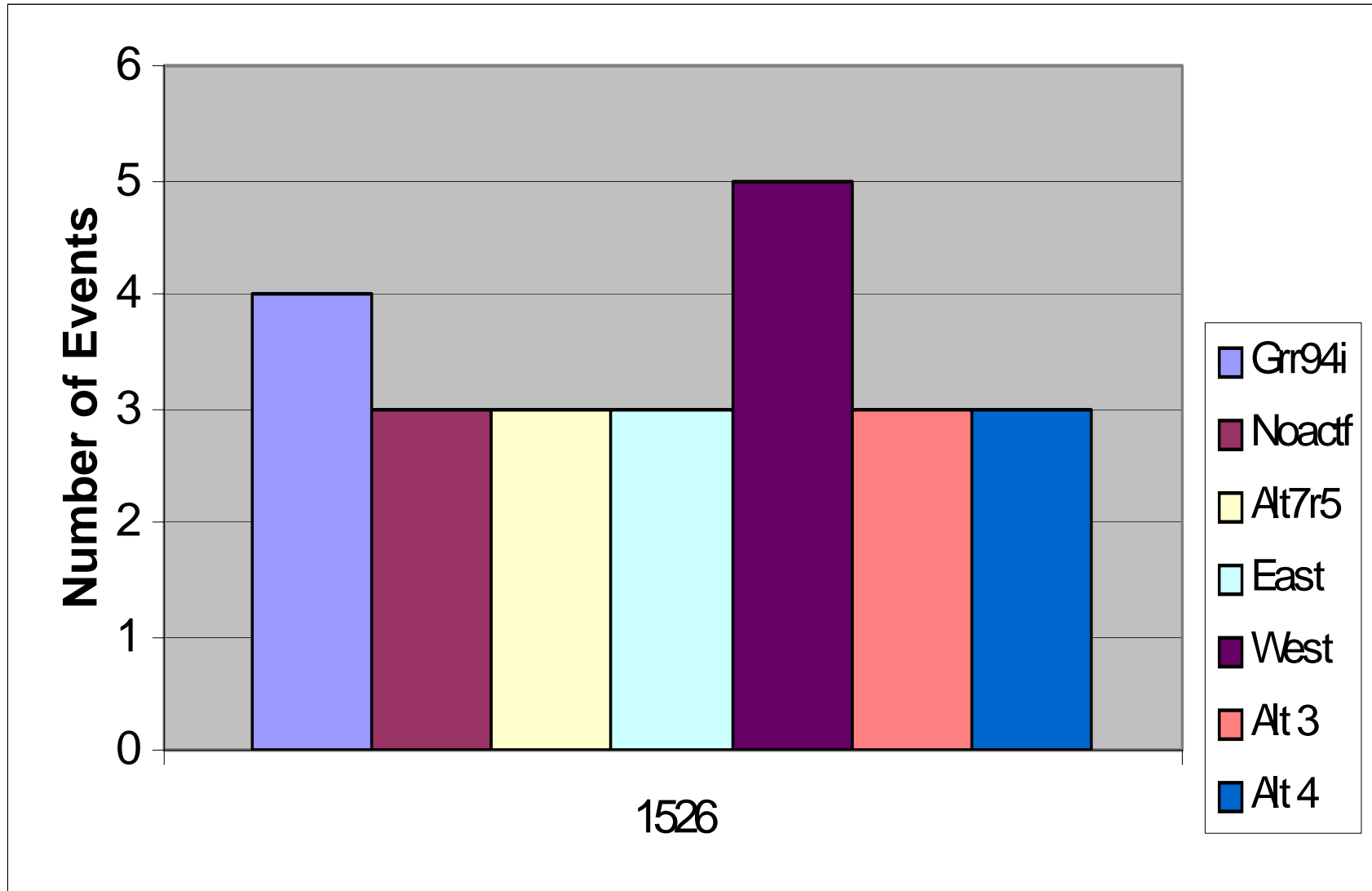
Row Crops All Year
SFWMM 1/1/1965-12/31/2000
Percent of time



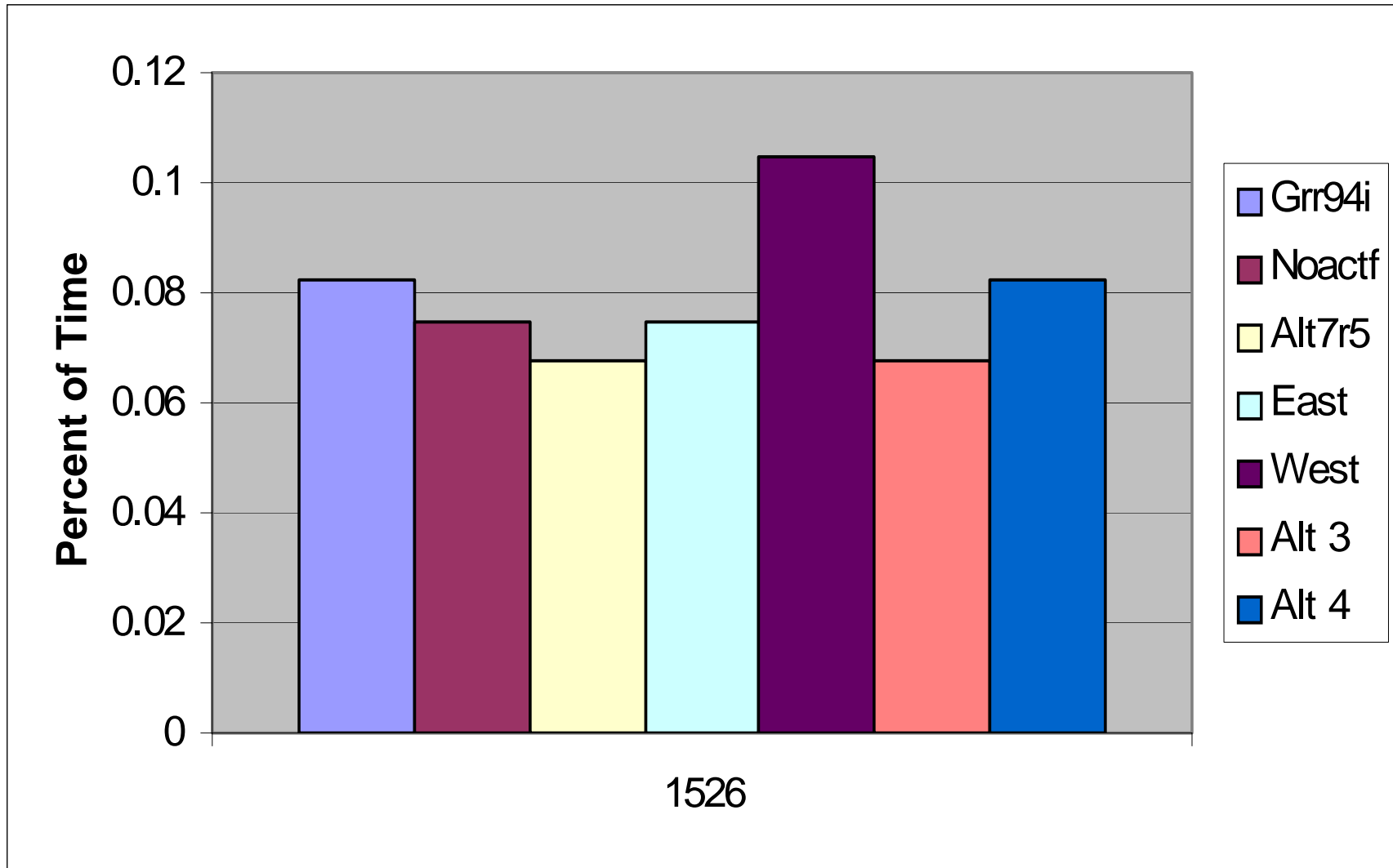
Row Crops All Year
SFWMM 1/1/1965-12/31/2000
Average Duration of Event



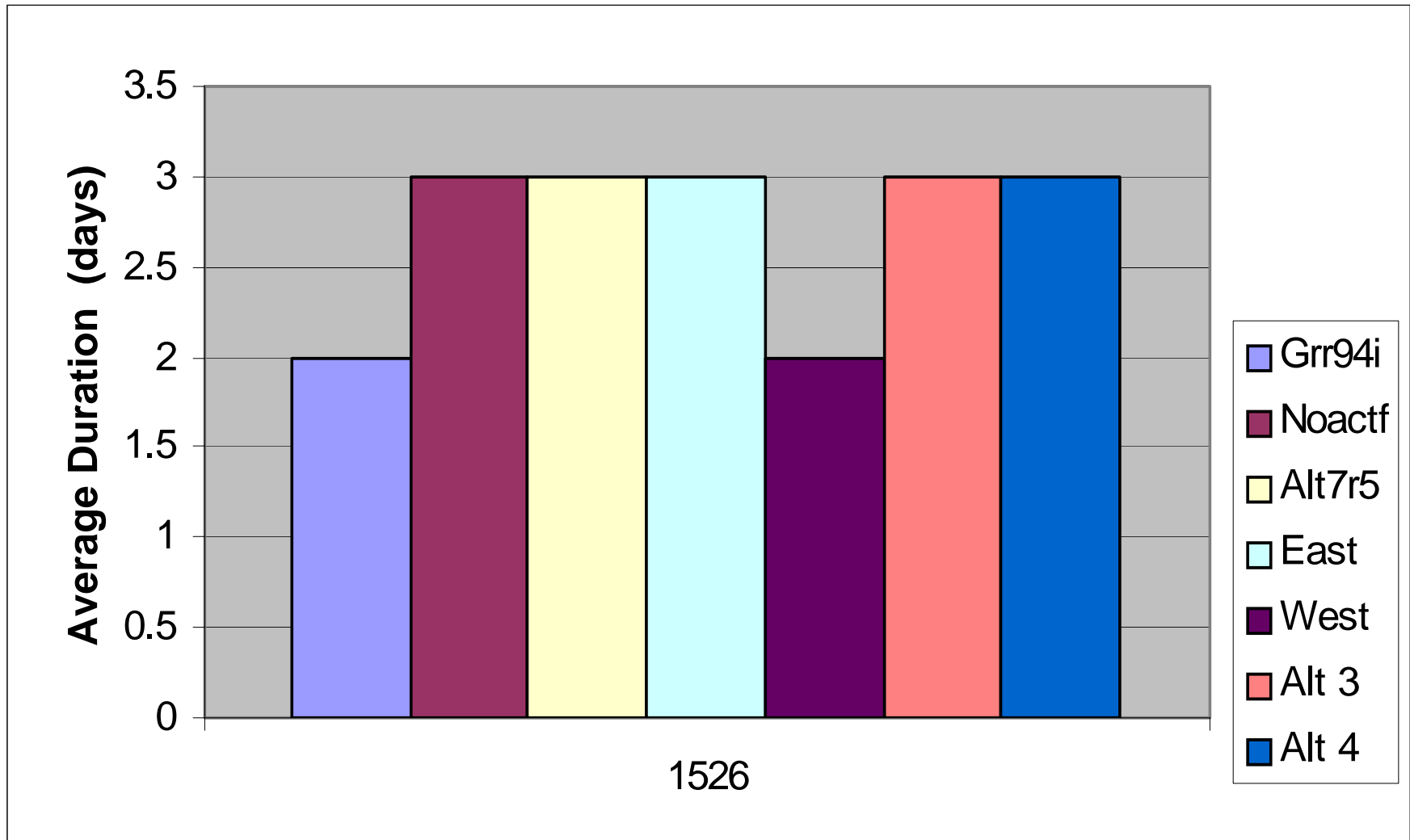
Row Crops September - March
SFWMM 1/1/1965-12/31/2000
Number of events



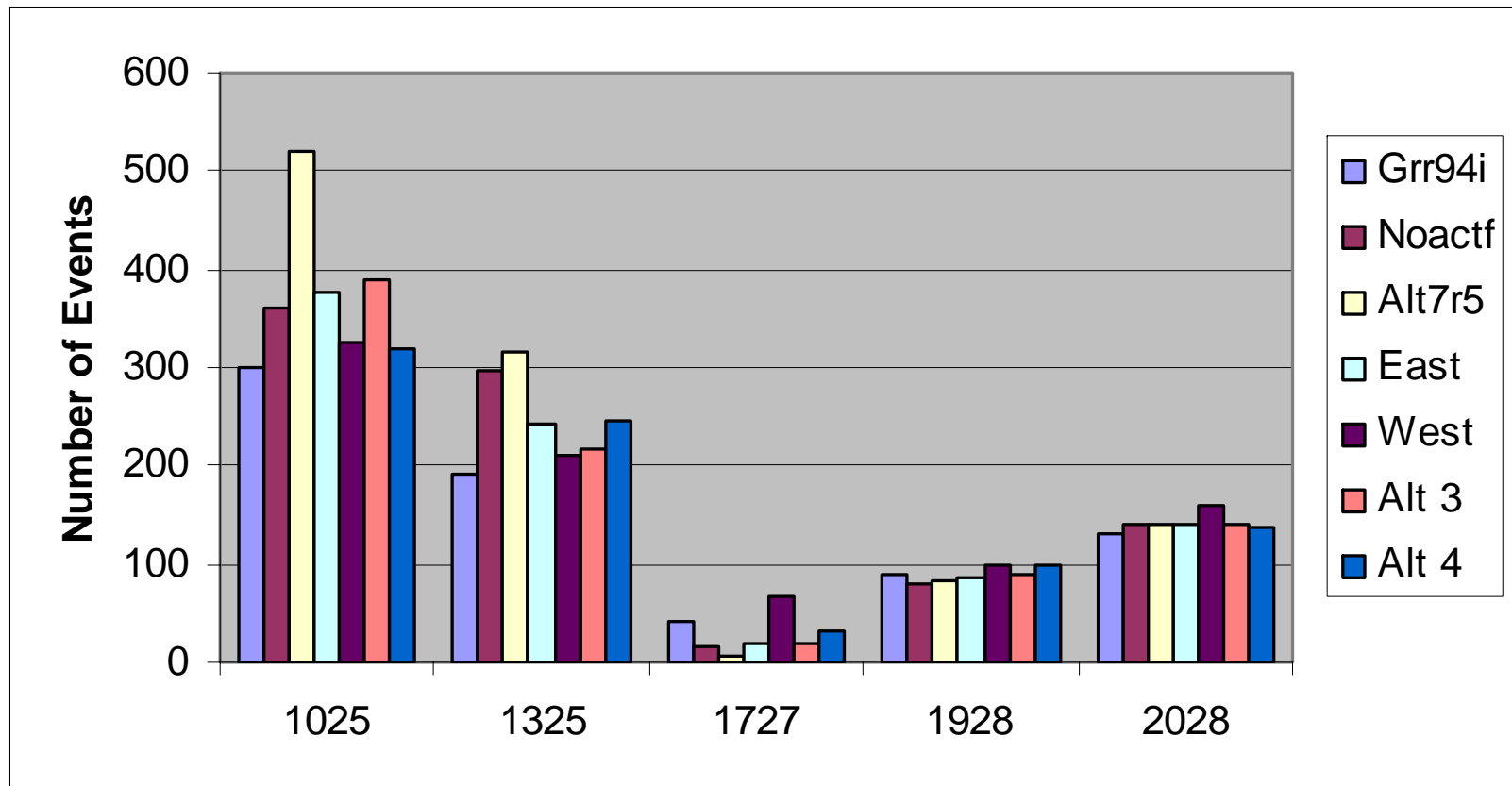
Row Crops September - March
SFWMM 1/1/1965-12/31/2000
Percent of Time



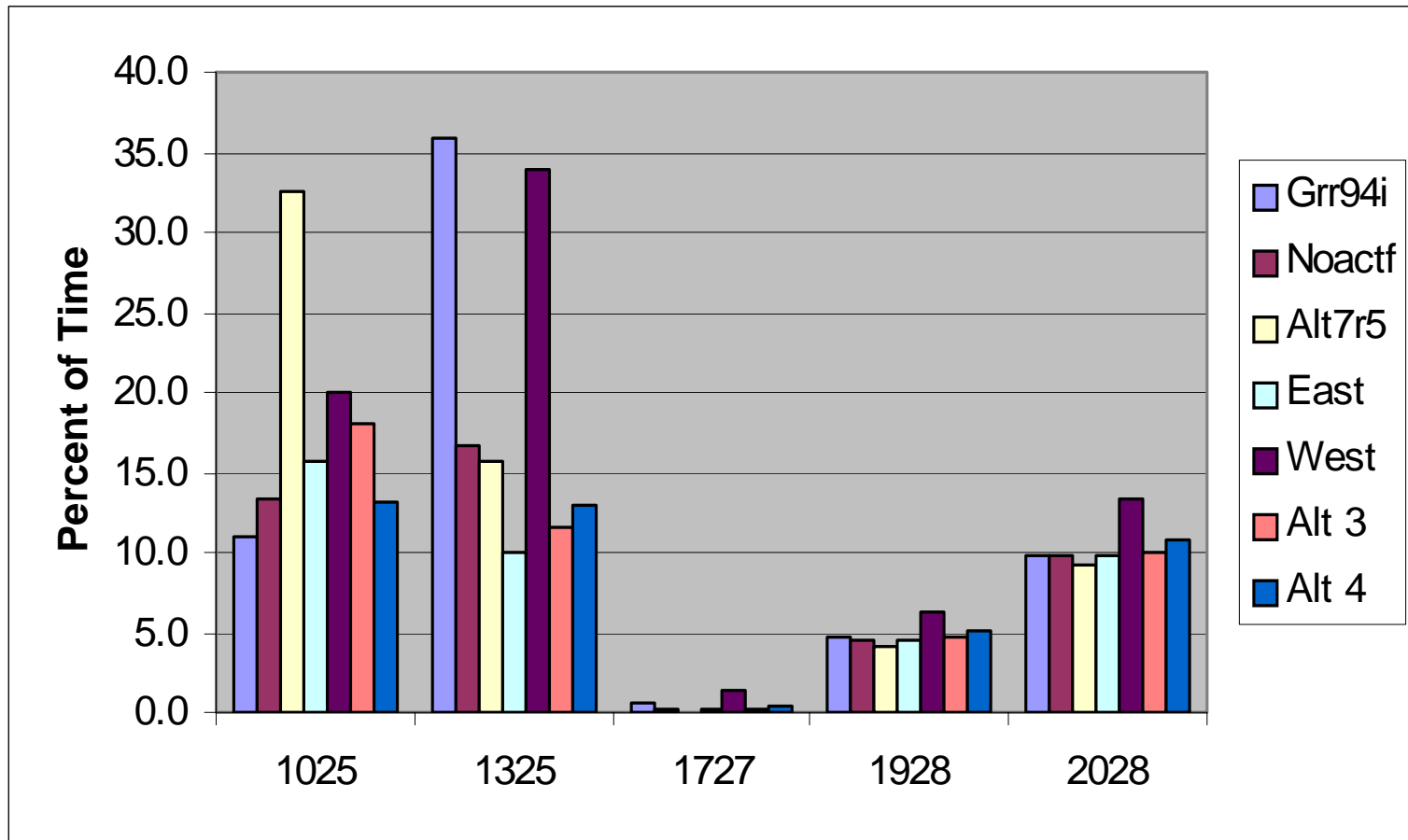
Row Crops September - March
SFWMM 1/1/1965-12/31/2000
Average Duration of Event



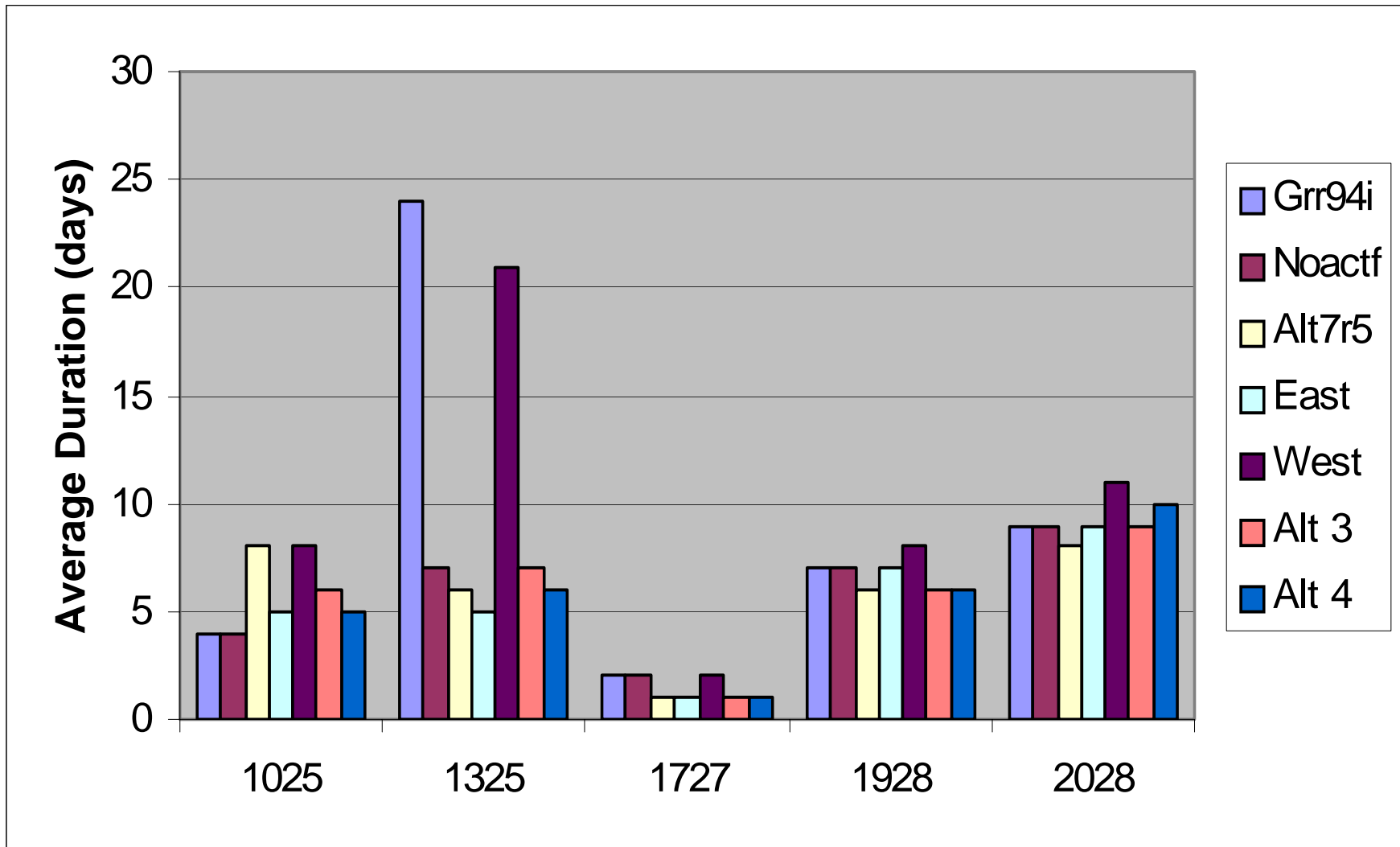
Fruits and Nurseries
SFWMM 1/1/1965-12/31/2000
Number of Events



Fruits and Nurseries
SFWMM 1/1/1965-12/31/2000
Percent of Time

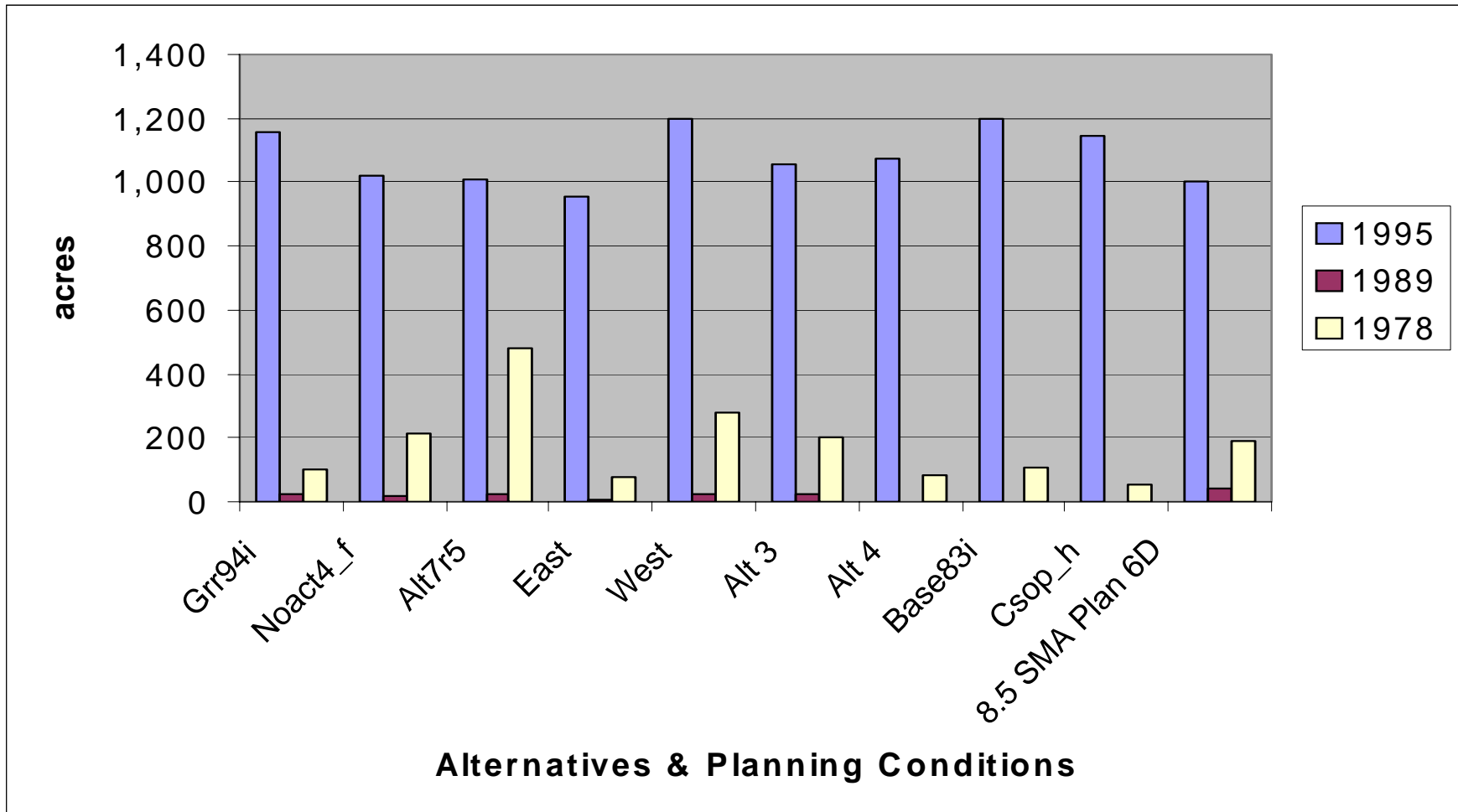


Fruits and Nurseries
SFWMM 1/1/1965-12/31/2000
Average Duration of Event

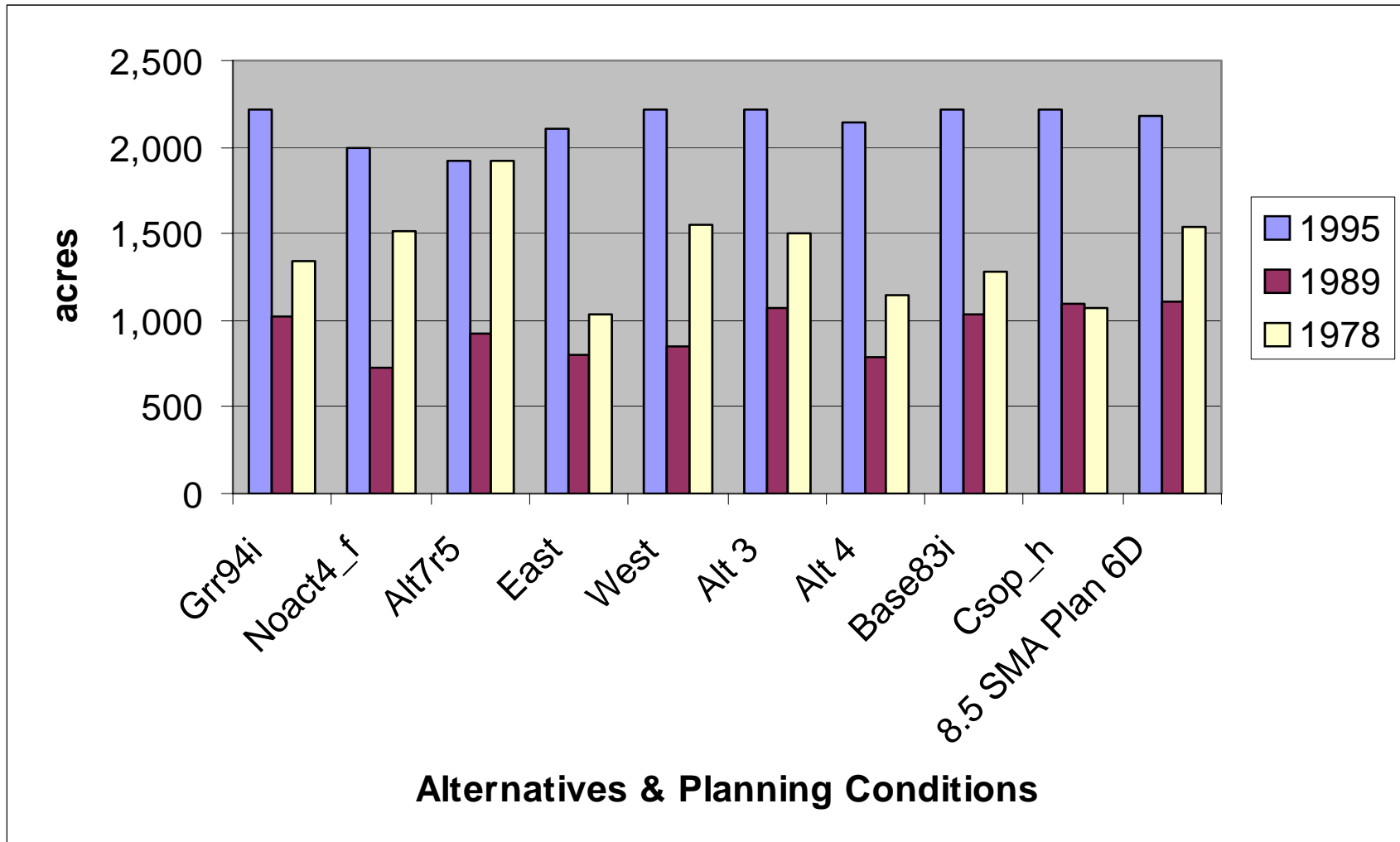


Modbranch Results

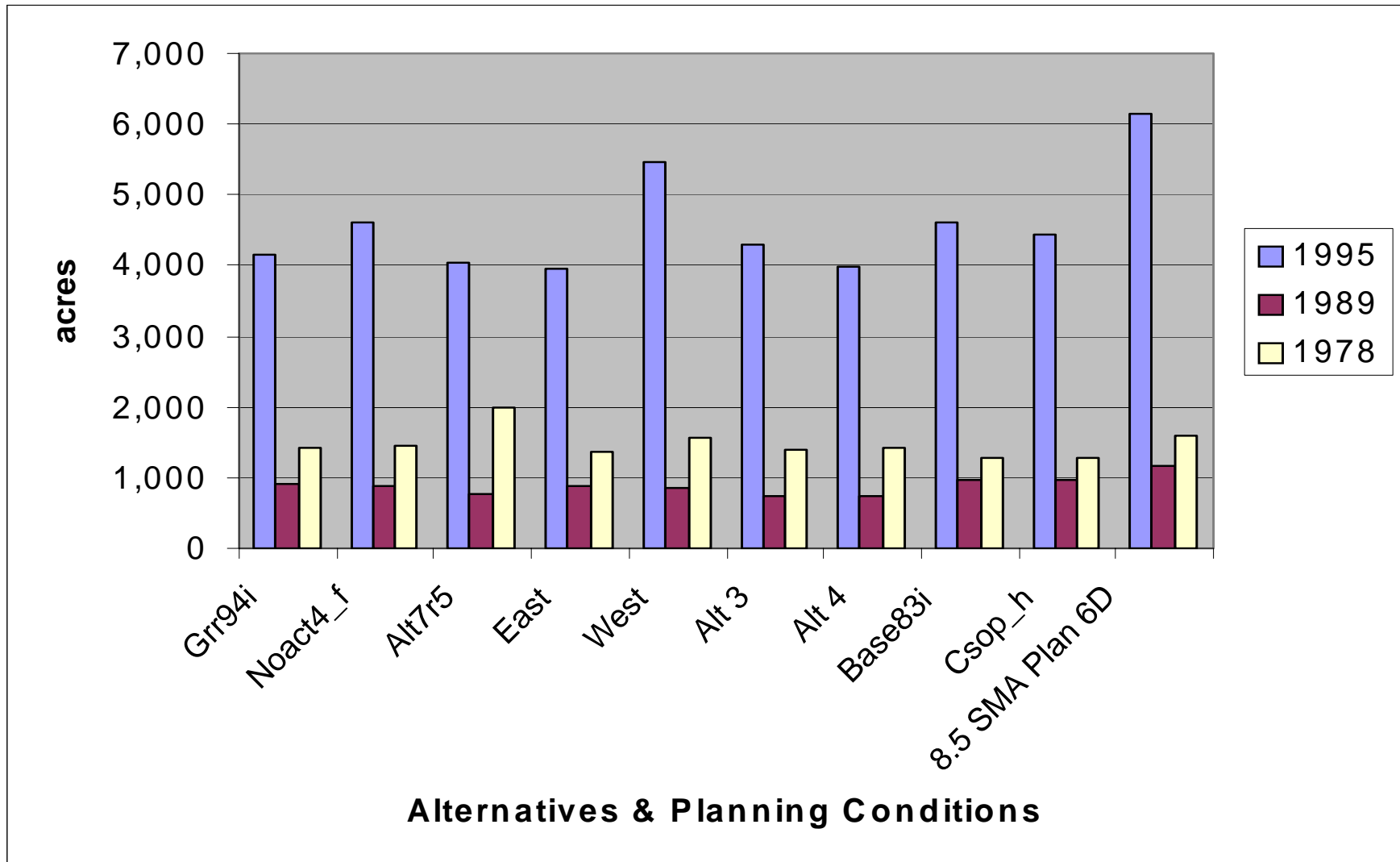
Row crops impacted 8.5 SMA Acres Modbranch



Fruit trees impacted 8.5 SMA Acres Modbranch



Row crops impacted East of L-31N Acres Modbranch



Fruit trees impacted East of L-31N Acres Modbranch

