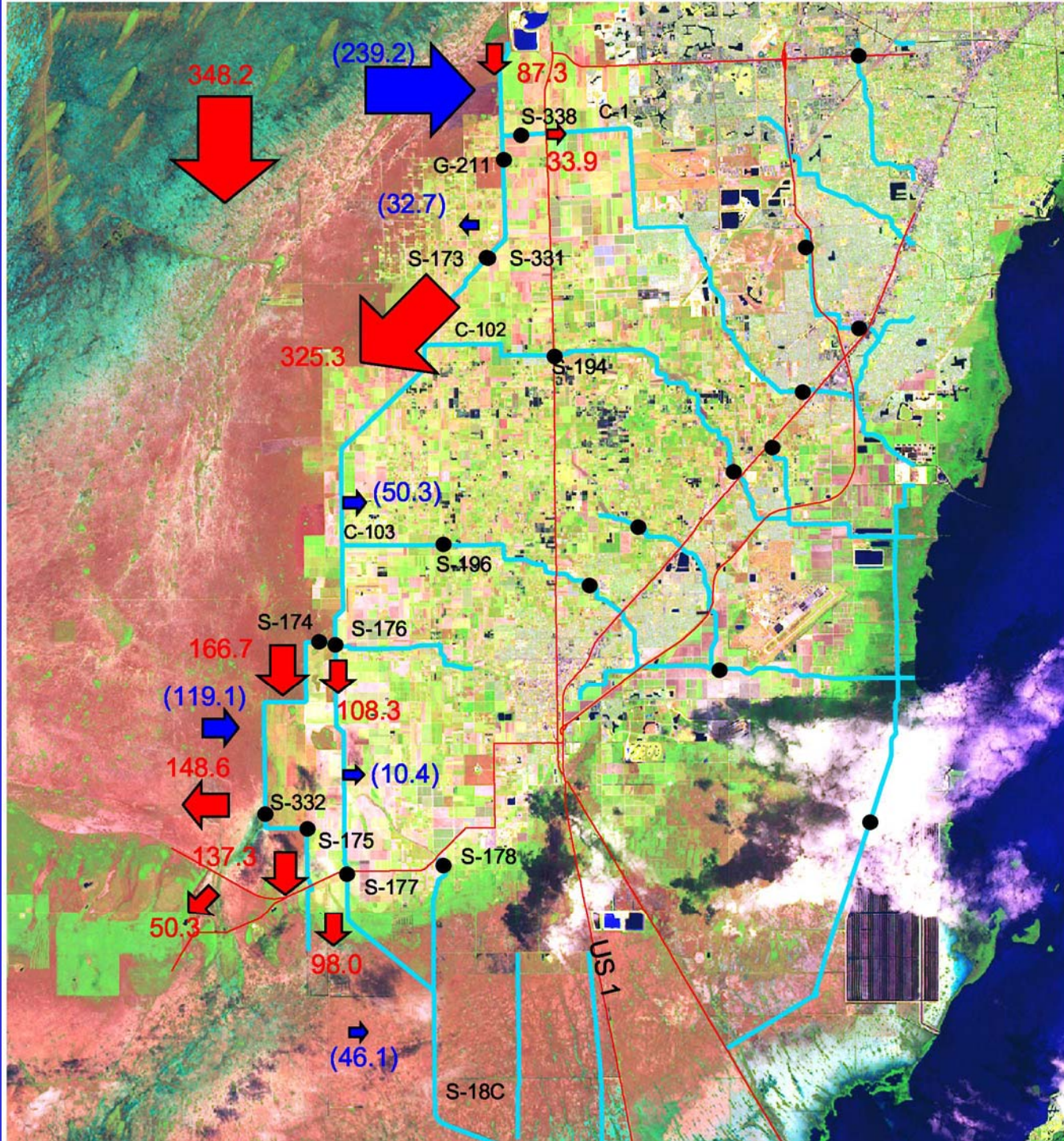


CSOP

Big Red Arrow and S-356

Presented by:
Dennis Duke
U.S. Army Corps of Engineers
Jacksonville District

Combined Structural and Operational Plan Advisory Team
Organizational Meeting
June 17, 2004



Purpose of S-356 Pump Station

- **The S-356 pump station was authorized specifically to handle increased seepage expected to occur from WCA-3B and northeastern ENP as a result of implementing the MWD ENP project. Current or existing condition**

Capacity of S-356 Pump Station

- Under the MWD ENP project, the S-356 pump station is limited to 500 cfs.
- Originally, the S-356 pump station was sized at 970 cfs to accommodate seepage from WCA-3B, ENP, and seepage pumped back to the L-31N via the 8.5 SMA S-357 pump station.
- The subsequent redesign of the S-357 pump station to direct seepage from the 8.5 SMA south means that the S-356 pump station no longer needs to accommodate the discharge from S-357.
- The result is that the capacity of the S-357 was subtracted from the original capacity of the S-356 pump station.

Capacity of S-356 Pump Station

- The existing 500 cfs capacity at the S-356 pump station is sufficient to handle the increased seepage resulting from the increases in stage in WCA-3B and NESRS predicted in the MWD ENP project 1992 GDM, as well as some portion of the existing seepage from these areas.
- The S-356 pump station will be operated to handle that portion of the existing seepage; however, no additional capacity will be added to handle existing seepage under either the MWD ENP project or the C-111 Canal project due a lack of authority for this additional expenditure.

Capacity of S-356 Pump Station

- Existing seepage that cannot currently be handled by the 500 cfs capacity of the existing S-356 pump station will be authorized separately, on a parallel course with CSOP, as a second phase of seepage control.
- A conservative combination of modeling results and field data will be used to provide realistic seepage estimates for the design and operation of pump stations for the Combined Structural and Operational Plan (CSOP) for the MWD ENP and C-111 Canal projects.

Operation of S-356 Pump Station

For purposes of developing CSOP alternatives, the operational criteria are listed below in priority order:

- **First, use the S-356 pump station to its maximum capacity of 500 cfs to pump water from the L-30 and L-31N canals, into the L-29 canal. The S-356 operating protocols will ensure that S-356 operations will not harm ENP, WCA-3, or the Pennsuco wetlands.**
- **Second, discharge water using S-338 to the extent there is capacity in its receiving basin.**
- **As a last resort, pass water south through S-331/S-173. This maintains the interbasin division originally anticipated to the extent possible.**

Operation of S-356 Pump Station

- **Under MWD ENP project, the S-356 pump station will return lost seepage to the extent practical.**
- **As with new water introduced into ENP, all applicable water quality standards apply to the discharge by the S-356 pump station.**
- **The operating protocols will prevent the introduction of urban stormwater discharges from the coastal basins into the L-30 or L-31N canals when S-356 is operational.**
- **S-356 will not operate when water supply deliveries are being made from Lake Okeechobee to the L-30 canal or the South Dade Conveyance System.**

Questions?

