

# Modified Water Deliveries to Everglades National Park: Potential Effects of Interim Alternatives 4, 5, 7 and 8 on WCA-3B

---

Tim Towles

Florida Fish and Wildlife Conservation Commission

12 January 2004

## **Objectives for Modified Water Deliveries:**

- Identified in DOI Planning Aid Letter (8/18/99)
  - FWC concurrence (8/23/99)
- 

## **Areas of Special Emphasis:**

1. Restore natural flow patterns to North East Shark River Slough.
2. Meet requirements of Endangered Species Act and promote recovery.
3. Preserve tree islands and restore where possible.
4. Preserve recreational use to max extent consistent with needs of the natural system.
5. Maximize compatibility with CERP.

# What have been the potential effects of previous Mod Waters alternatives in Water Conservation Areas 3A and 3B?

---

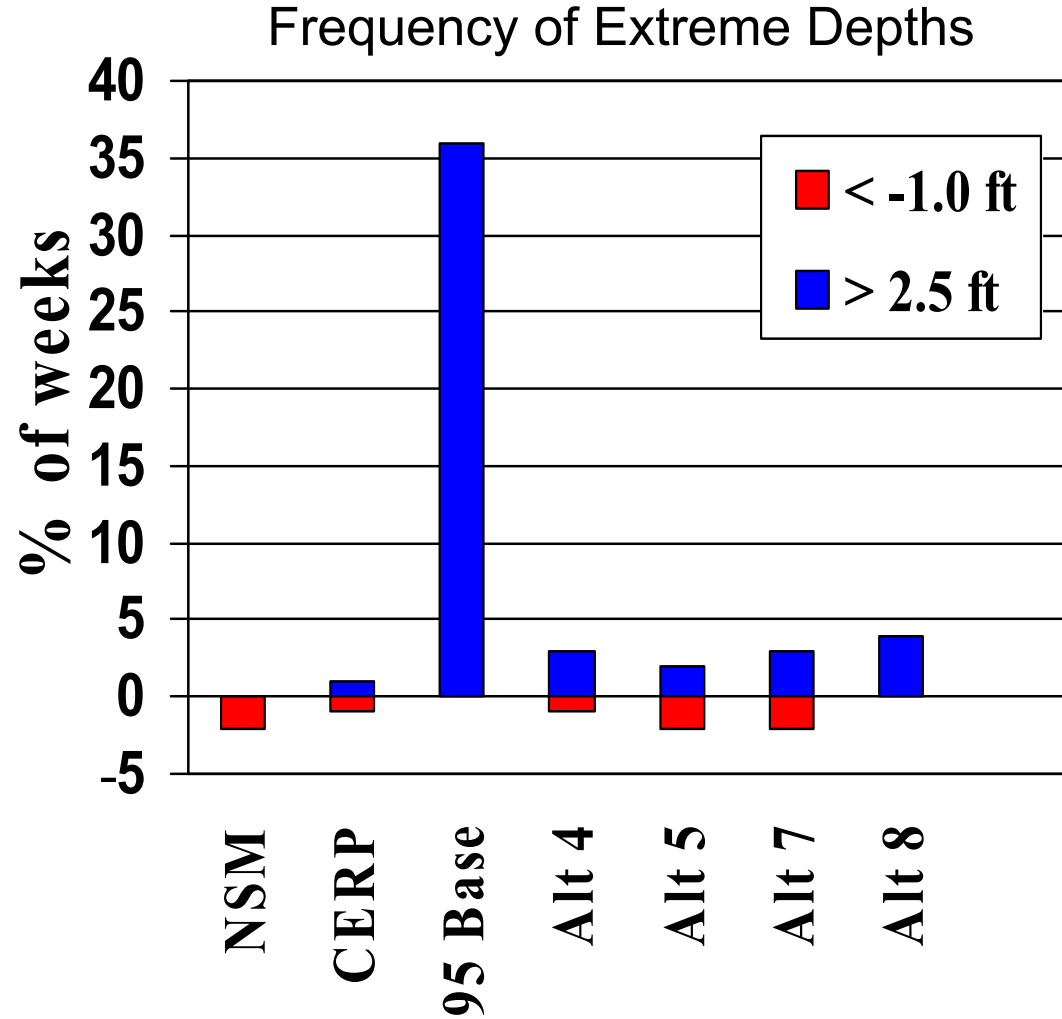
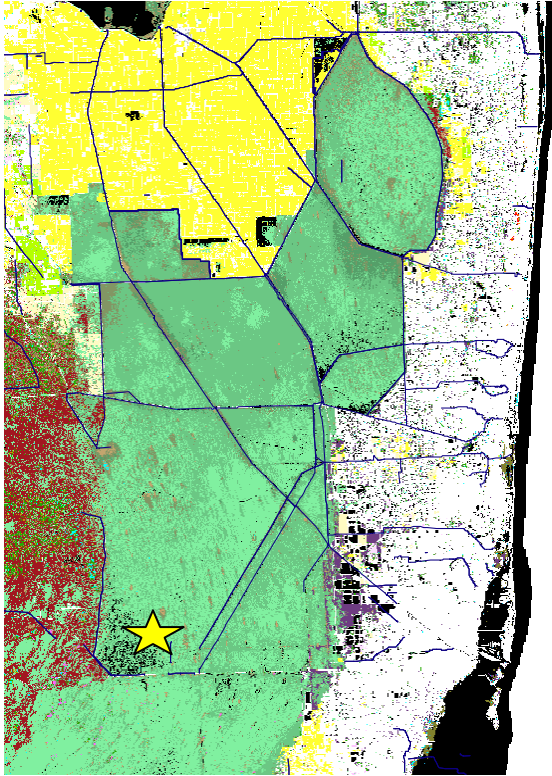
## Potential Improvements:

- Reduced flooding of tree islands in WCA-3A
- Overland flow *through* WCA-3B

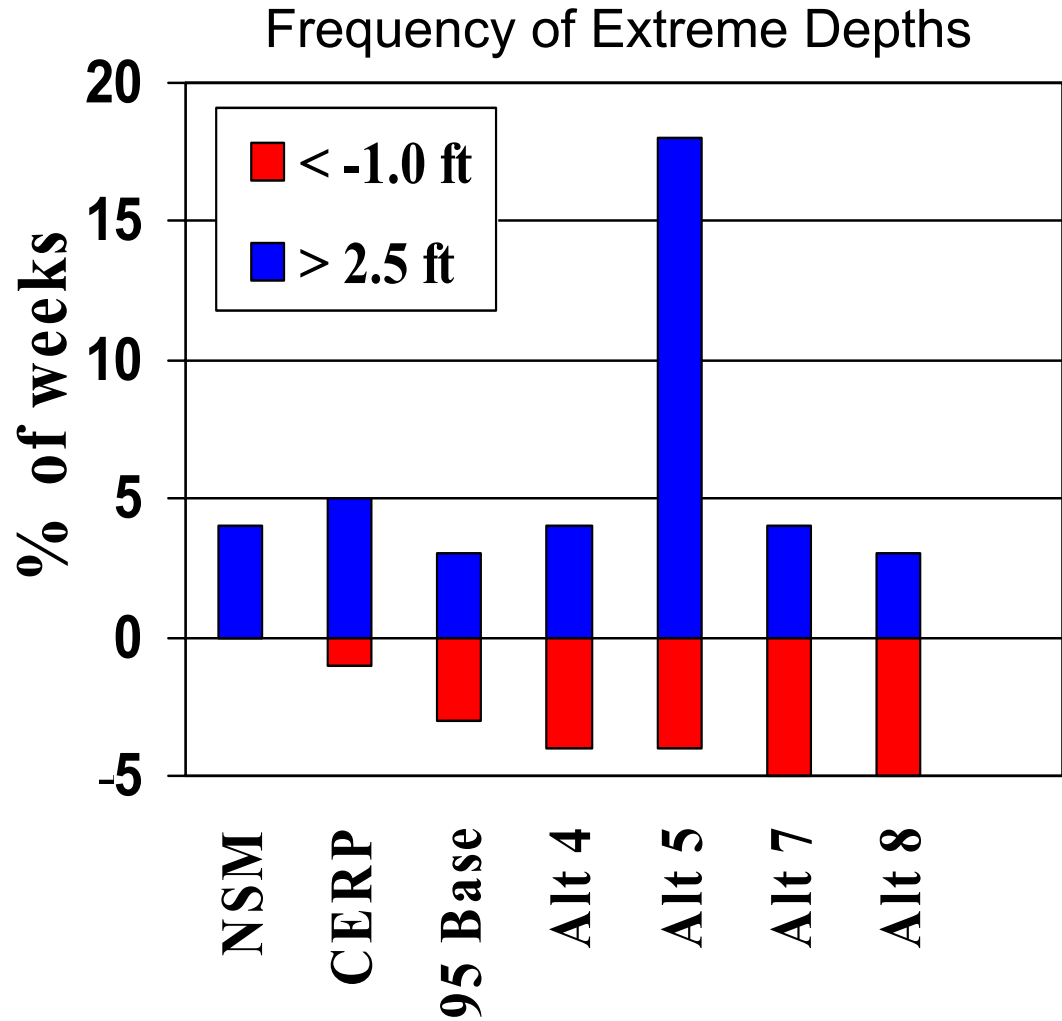
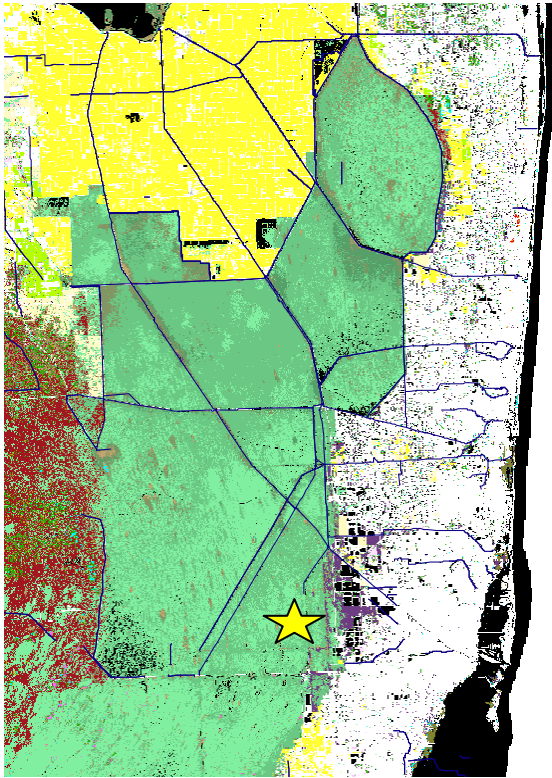
## Potential Problems:

- Increased tree island flooding in WCA-3B
- Increased dry conditions in WCA-3A & WCA-3B
- Reduced quality of L-67 fishery
- Reduced recreational access to L-67 canals
- Reduced water quality in WCA-3B

# Performance in Southern WCA-3A



# Performance of Alternatives in East WCA-3B



## Performance of Alternatives 4, 5, 7 and 8 in Water Conservation Areas 3A and 3B

---

### **All four alternatives:**

- substantially reduce tree island flooding in WCA-3A;
- partially restore overland flow through WCA-3B;
- may increase drought conditions in some regions;
- may impact the quality of the L-67 canal fishery through shortened hydroperiods and reduced depths;
- will require design features to maintain recreational access.

## **Performance of Alternatives 4, 5, 7 and 8 in Water Conservation Areas 3A and 3B**

---

### **Alternative 5 has significant negative effects:**

- high frequencies of extreme high water in WCA-3B (>3x CERP values);
- loss of drought refugium for aquatic animals in southern WCA-3A
- elimination of a large part of the L-67A canal fishery.

### **Alternatives 4, 7 and 8 have more desirable effects:**

- maintain depth conditions in WCA-3B that are intermediate between the 95 Base and the CERP;
- maintain the L-67A canal fishery along its length.